



**INTERNATIONAL  
GEMOLOGICAL  
INSTITUTE**

**ELECTRONIC COPY**

**LG649461229**



**August 30, 2024**  
**IGI Report Number LG649461229**  
**ROUND BRILLIANT**  
**LABORATORY GROWN DIAMOND**  
**5.01 - 5.04 X 3.11 MM**  
**Carat Weight 0.48 CARAT**  
**Color Grade D**  
**Clarity Grade VVS 2**  
**Cut Grade IDEAL**  
**Polish EXCELLENT**  
**Symmetry EXCELLENT**  
**Fluorescence NONE**  
**Inscription(s) IGI LG649461229**  
**Comments: HEARTS & ARROWS** This Laboratory Grown Diamond was created by Chemical Vapor Deposition (CVD) growth process. Type Iia

**LABORATORY GROWN DIAMOND REPORT**

**August 30, 2024**  
**IGI Report Number LG649461229**  
**Description LABORATORY GROWN DIAMOND**  
**Shape and Cutting Style ROUND BRILLIANT**  
**Measurements 5.01 - 5.04 X 3.11 MM**

**GRADING RESULTS**

**Carat Weight 0.48 CARAT**  
**Color Grade D**  
**Clarity Grade VVS 2**  
**Cut Grade IDEAL**

**ADDITIONAL GRADING INFORMATION**

**Polish EXCELLENT**  
**Symmetry EXCELLENT**  
**Fluorescence NONE**  
**Inscription(s) IGI LG649461229**

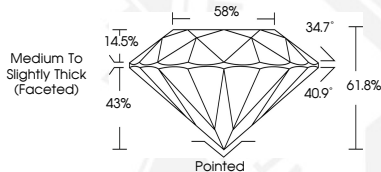
**Comments: HEARTS & ARROWS**  
 This Laboratory Grown Diamond was created by Chemical Vapor Deposition (CVD) growth process. Type Iia



**HEARTS & ARROWS**



**Sample Image Used**



**August 30, 2024**  
**IGI Report Number LG649461229**  
**ROUND BRILLIANT**  
**LABORATORY GROWN DIAMOND**  
**5.01 - 5.04 X 3.11 MM**  
**Carat Weight 0.48 CARAT**  
**Color Grade D**  
**Clarity Grade VVS 2**  
**Cut Grade IDEAL**  
**Polish EXCELLENT**  
**Symmetry EXCELLENT**  
**Fluorescence NONE**  
**Inscription(s) IGI LG649461229**  
**Comments: HEARTS & ARROWS** This Laboratory Grown Diamond was created by Chemical Vapor Deposition (CVD) growth process. Type Iia

THIS DOCUMENT WAS PRODUCED WITH THE FOLLOWING SECURITY MEASURES: SPECIAL DOCUMENT PAPER, INK SCREENS, WATERMARK, BACKGROUND DESIGN, HOLOGRAM AND OTHER SECURITY FEATURES NOT LISTED AND DO EXCEED DOCUMENT SECURITY INDUSTRY GUIDELINES.

For terms & conditions and to verify this report, please visit [www.igi.org](http://www.igi.org)