



**ELECTRONIC COPY**

LG649470205  
Report verification at igi.org



September 5, 2024

IGI Report Number **LG649470205**

Description **LABORATORY GROWN DIAMOND**

Shape and Cutting Style **PRINCESS CUT**

Measurements **8.23 X 8.01 X 6.05 MM**

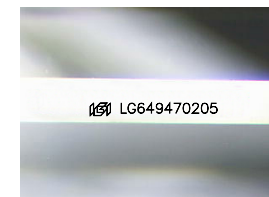
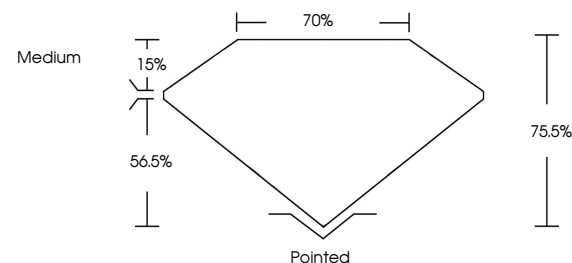
**GRADING RESULTS**

Carat Weight **3.69 CARATS**

Color Grade **F**

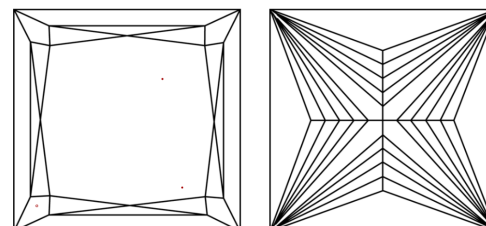
Clarity Grade **VVS 2**

**PROPORTIONS**



Sample Image Used

**CLARITY CHARACTERISTICS**



**KEY TO SYMBOLS**

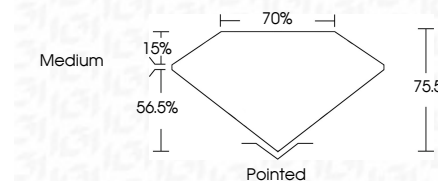
Red symbols indicate internal characteristics.  
Green symbols indicate external characteristics.

**COLOR**

D E F G H I J Faint Very Light Light

**CLARITY**

IF	VS <sup>1-2</sup>	VS <sup>1-2</sup>	SI <sup>1-2</sup>	I <sup>1-3</sup>
Internally Flawless	Very Very Slightly Included	Very Slightly Included	Slightly Included	Included



**ADDITIONAL GRADING INFORMATION**

Polish **EXCELLENT**

Symmetry **EXCELLENT**

Fluorescence **NONE**

Inscription(s) **IGI LG649470205**

Comments: This Laboratory Grown Diamond was created by Chemical Vapor Deposition (CVD) growth process.  
Type IIa



**IGI**



September 5, 2024  
IGI Report No. LG649470205  
**PRINCESS CUT**

**3.69 CARATS**  
F

8.23 X 8.01 X 6.05 MM  
VVS 2  
75.5%  
70%  
Medium

Pointed  
EXCELLENT  
EXCELLENT  
NONE  
IGI LG649470205

Comments: This Laboratory Grown Diamond was created by Chemical Vapor Deposition (CVD) growth process.  
Type IIa