



ELECTRONIC COPY

LG649470219
Report verification at igi.org



September 3, 2024

IGI Report Number **LG649470219**

Description **LABORATORY GROWN DIAMOND**

Shape and Cutting Style **EMERALD CUT**

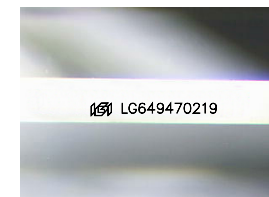
Measurements **8.28 X 5.82 X 4.07 MM**

GRADING RESULTS

Carat Weight **2.07 CARATS**

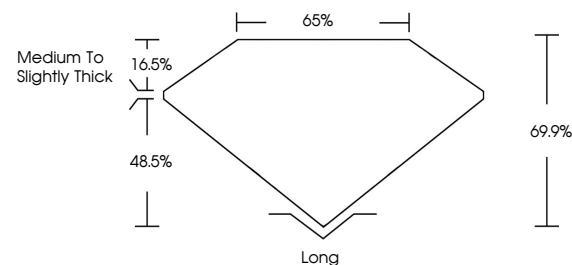
Color Grade **F**

Clarity Grade **VVS 2**

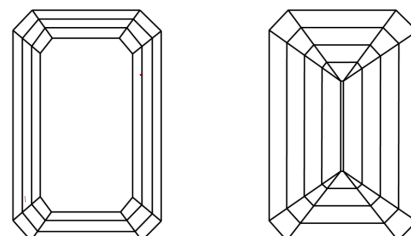


Sample Image Used

PROPORTIONS



CLARITY CHARACTERISTICS



KEY TO SYMBOLS

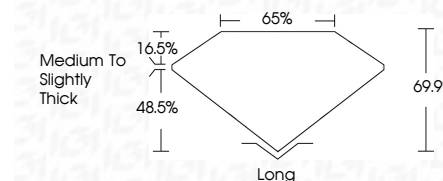
Red symbols indicate internal characteristics.
Green symbols indicate external characteristics.

COLOR

D E F G H I J Faint Very Light Light

CLARITY

IF	VS ¹⁻²	VS ¹⁻²	SI ¹⁻²	I ¹⁻³
Internally Flawless	Very Very Slightly Included	Very Slightly Included	Slightly Included	Included



ADDITIONAL GRADING INFORMATION

Polish **EXCELLENT**

Symmetry **EXCELLENT**

Fluorescence **NONE**

Inscription(s) **IGI LG649470219**

Comments: This Laboratory Grown Diamond was created by Chemical Vapor Deposition (CVD) growth process.
Type IIa



IGI



September 3, 2024
IGI Report No LG649470219
EMERALD CUT

2.07 CARATS
F

Carat Weight **2.07 CARATS**
Color Grade **F**
Clarity Grade **VVS 2**
Depth **69.9%**
Table **65%**
Girdle **Medium to Slightly Thick**

Culet **Long**
Polish **EXCELLENT**
Symmetry **EXCELLENT**
Fluorescence **NONE**
Inscription(s) **IGI LG649470219**

Comments: This Laboratory Grown Diamond was created by Chemical Vapor Deposition (CVD) growth process.
Type IIa