



INTERNATIONAL GEMOLOGICAL INSTITUTE

ELECTRONIC COPY

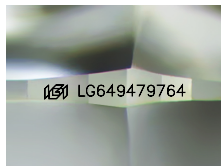
LG649479764



August 23, 2024
 IGI Report Number LG649479764
 ROUND BRILLIANT
 LABORATORY GROWN DIAMOND
 5.13 - 5.18 X 3.17 MM
 Carat Weight 0.51 CARAT
 Color Grade D
 Clarity Grade VS 1
 Cut Grade EXCELLENT
 Polish EXCELLENT
 Symmetry EXCELLENT
 Fluorescence NONE
 Inscription(s) IGI LG649479764

LABORATORY GROWN DIAMOND REPORT

August 23, 2024
 IGI Report Number LG649479764
 Description LABORATORY GROWN DIAMOND
 Shape and Cutting Style ROUND BRILLIANT
 Measurements 5.13 - 5.18 X 3.17 MM



Sample Image Used

GRADING RESULTS

Carat Weight 0.51 CARAT
 Color Grade D
 Clarity Grade VS 1
 Cut Grade EXCELLENT

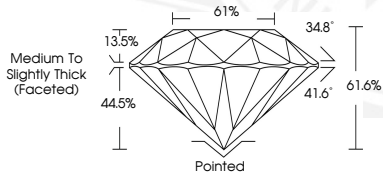
ADDITIONAL GRADING INFORMATION

Polish EXCELLENT
 Symmetry EXCELLENT
 Fluorescence NONE
 Inscription(s) IGI LG649479764

Comments: This Laboratory Grown Diamond was created by Chemical Vapor Deposition (CVD) growth process. Type IIa



August 23, 2024
 IGI Report Number LG649479764
 ROUND BRILLIANT
 LABORATORY GROWN DIAMOND
 5.13 - 5.18 X 3.17 MM
 Carat Weight 0.51 CARAT
 Color Grade D
 Clarity Grade VS 1
 Cut Grade EXCELLENT
 Polish EXCELLENT
 Symmetry EXCELLENT
 Fluorescence NONE
 Inscription(s) IGI LG649479764



THIS DOCUMENT WAS PRODUCED WITH THE FOLLOWING SECURITY MEASURES: SPECIAL DOCUMENT PAPER, INK SCREENS, WATERMARK, BACKGROUND DESIGN, HOLOGRAM AND OTHER SECURITY FEATURES NOT LISTED AND DO EXCEED DOCUMENT SECURITY INDUSTRY GUIDELINES.

For terms & conditions and to verify this report, please visit www.igi.org