



ELECTRONIC COPY

LG649480227
Report verification at igi.org



August 31, 2024
IGI Report Number **LG649480227**
Description **LABORATORY GROWN DIAMOND**
Shape and Cutting Style **CUT CORNERED
RECTANGULAR MODIFIED
BRILLIANT**
Measurements **10.54 X 7.88 X 5.19 MM**
GRADING RESULTS
Carat Weight **4.04 CARATS**
Color Grade **FANCY VIVID BLUE**
Clarity Grade **VS 1**

LABORATORY GROWN DIAMOND REPORT

August 31, 2024
IGI Report Number **LG649480227**
Description **LABORATORY GROWN DIAMOND**
Shape and Cutting Style **CUT CORNERED RECTANGULAR
MODIFIED BRILLIANT**
Measurements **10.54 X 7.88 X 5.19 MM**

GRADING RESULTS

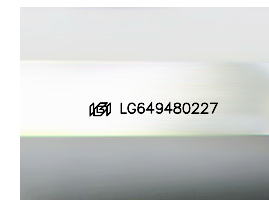
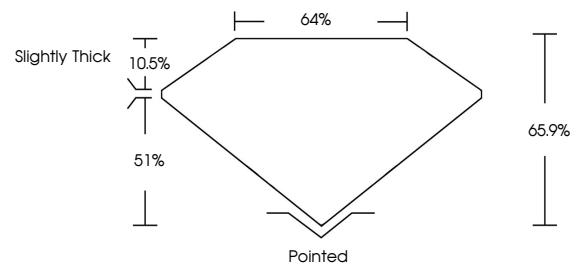
Carat Weight **4.04 CARATS**
Color Grade **FANCY VIVID BLUE**
Clarity Grade **VS 1**

ADDITIONAL GRADING INFORMATION

Polish **EXCELLENT**
Symmetry **EXCELLENT**
Fluorescence **NONE**
Inscription(s) **IGI LG649480227**

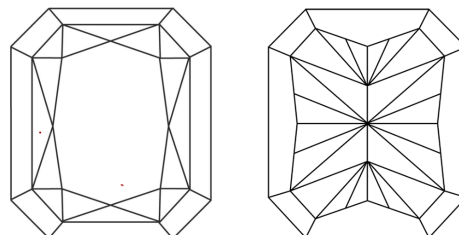
Comments: This Laboratory Grown Diamond was created by Chemical Vapor Deposition (CVD) growth process. Indications of post-growth treatment.

PROPORTIONS



Sample Image Used

CLARITY CHARACTERISTICS



KEY TO SYMBOLS

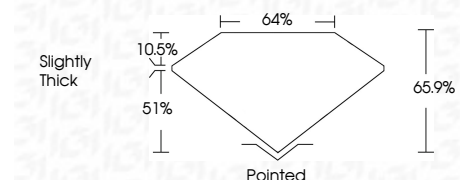
Red symbols indicate internal characteristics.
Green symbols indicate external characteristics.

COLOR

D E F G H I J Faint Very Light Light

CLARITY

IF	VS ¹⁻²	VS ¹⁻²	SI ¹⁻²	I ¹⁻³
Internally Flawless	Very Very Slightly Included	Very Slightly Included	Slightly Included	Included



ADDITIONAL GRADING INFORMATION

Polish **EXCELLENT**
Symmetry **EXCELLENT**
Fluorescence **NONE**
Inscription(s) **IGI LG649480227**
Comments: This Laboratory Grown Diamond was created by Chemical Vapor Deposition (CVD) growth process. Indications of post-growth treatment.



August 31, 2024
IGI Report No **LG649480227**
CUT CORNERED RECT. MODIFIED BRILLIANT
4.04 CARATS
Carat Weight **FANCY VIVID BLUE**
Color Grade **VS 1**
Depth **65.9%**
Table **64%**
Girdle **Slightly Thick**
Culet **Pointed**
Polish **EXCELLENT**
Symmetry **EXCELLENT**
Fluorescence **NONE**
Inscription(s) **IGI LG649480227**
Comments: This Laboratory Grown Diamond was created by Chemical Vapor Deposition (CVD) growth process. Indications of post-growth treatment.