



ELECTRONIC COPY

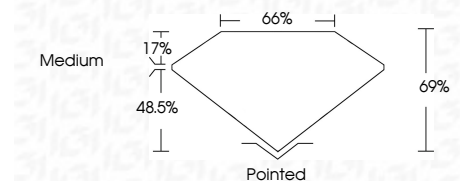
LG649489317
Report verification at igi.org



August 28, 2024
IGI Report Number LG649489317
Description LABORATORY GROWN DIAMOND
Shape and Cutting Style MODIFIED PRINCESS CUT
Measurements 6.94 X 6.78 X 4.68 MM

GRADING RESULTS

Carat Weight 2.18 CARATS
Color Grade D
Clarity Grade VVS 2



ADDITIONAL GRADING INFORMATION

Polish EXCELLENT
Symmetry EXCELLENT
Fluorescence NONE
Inscription(s) IGI LG649489317
Comments: This Laboratory Grown Diamond was created by Chemical Vapor Deposition (CVD) growth process. Type IIa



August 28, 2024
IGI Report No LG649489317
MODIFIED PRINCESS CUT
6.94 X 6.78 X 4.68 MM
2.18 CARATS
D
VVS 2
66%
65%
Medium
Pointed
EXCELLENT
EXCELLENT
NONE
IGI LG649489317
Comments: This Laboratory Grown Diamond was created by Chemical Vapor Deposition (CVD) growth process. Type IIa

August 28, 2024
IGI Report Number LG649489317
Description LABORATORY GROWN DIAMOND
Shape and Cutting Style MODIFIED PRINCESS CUT
Measurements 6.94 X 6.78 X 4.68 MM

GRADING RESULTS

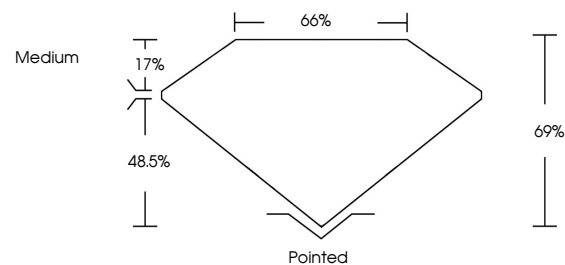
Carat Weight 2.18 CARATS
Color Grade D
Clarity Grade VVS 2

ADDITIONAL GRADING INFORMATION

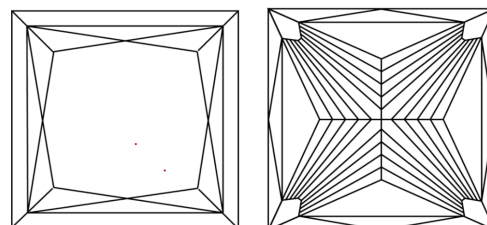
Polish EXCELLENT
Symmetry EXCELLENT
Fluorescence NONE
Inscription(s) IGI LG649489317

Comments: This Laboratory Grown Diamond was created by Chemical Vapor Deposition (CVD) growth process. Type IIa

PROPORTIONS

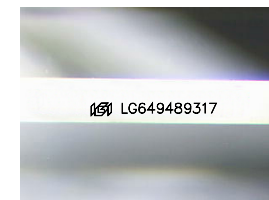


CLARITY CHARACTERISTICS



KEY TO SYMBOLS

Red symbols indicate internal characteristics.
Green symbols indicate external characteristics.



Sample Image Used

COLOR

D E F G H I J Faint Very Light Light

CLARITY

IF VVS 1-2 VS 1-2 SI 1-2 I 1-3
Internally Flawless Very Very Slightly Included Very Slightly Included Slightly Included Included

