



ELECTRONIC COPY

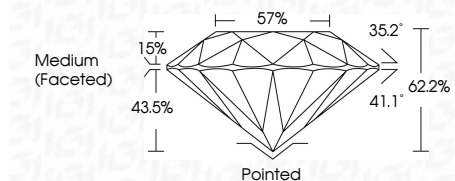
LG649493091
Report verification at igi.org



August 24, 2024
IGI Report Number **LG649493091**
Description **LABORATORY GROWN DIAMOND**
Shape and Cutting Style **ROUND BRILLIANT**
Measurements **8.15 - 8.19 X 5.08 MM**

GRADING RESULTS

Carat Weight **2.08 CARATS**
Color Grade **E**
Clarity Grade **VVS 2**
Cut Grade **IDEAL**

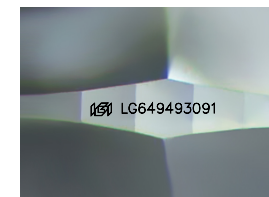


ADDITIONAL GRADING INFORMATION

Polish **EXCELLENT**
Symmetry **EXCELLENT**
Fluorescence **NONE**
Inscription(s) **IGI LG649493091**
Comments: This Laboratory Grown Diamond was created by Chemical Vapor Deposition (CVD) growth process. Type IIa

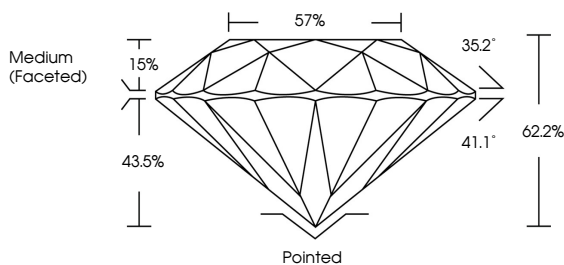


August 24, 2024
IGI Report No **LG649493091**
ROUND BRILLIANT
8.15 - 8.19 X 5.08 MM
Carat Weight **2.08 CARATS**
Color Grade **E**
Clarity Grade **VVS 2**
Cut Grade **IDEAL**
Depth **43.5%**
Table **15%**
Girdle **62.2%**
Medium (Faceted)
Culet **Pointed**
Polish **EXCELLENT**
Symmetry **EXCELLENT**
Fluorescence **NONE**
Inscription(s) **IGI LG649493091**
Comments: This Laboratory Grown Diamond was created by Chemical Vapor Deposition (CVD) growth process. Type IIa

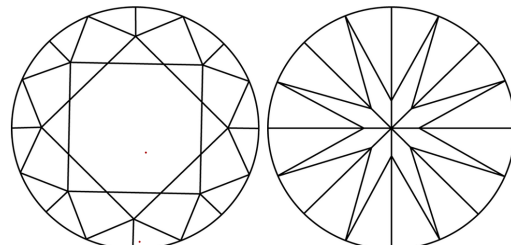


Sample Image Used

PROPORTIONS



CLARITY CHARACTERISTICS



KEY TO SYMBOLS

Red symbols indicate internal characteristics.
Green symbols indicate external characteristics.

COLOR

D E F G H I J Faint Very Light Light

CLARITY

IF VVS¹⁻² VS¹⁻² SI¹⁻² I¹⁻³
Internally Flawless Very Very Slightly Included Very Slightly Included Slightly Included Included

