



ELECTRONIC COPY

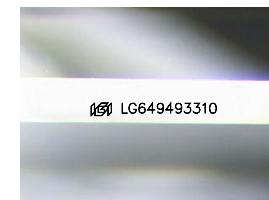
LG649493310
Report verification at igi.org



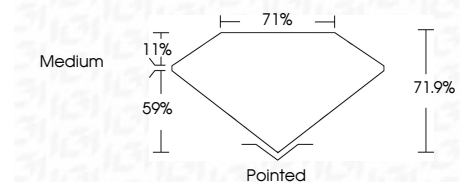
August 24, 2024
IGI Report Number **LG649493310**
Description **LABORATORY GROWN DIAMOND**
Shape and Cutting Style **PRINCESS CUT**
Measurements **8.71 X 8.66 X 6.23 MM**

GRADING RESULTS

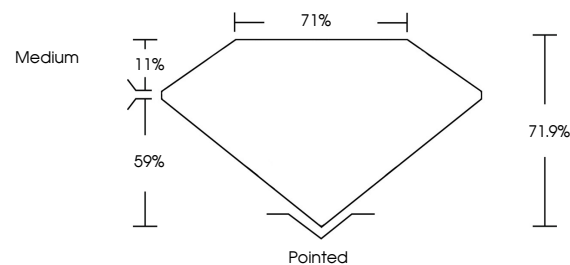
Carat Weight **4.07 CARATS**
Color Grade **D**
Clarity Grade **VVS 2**



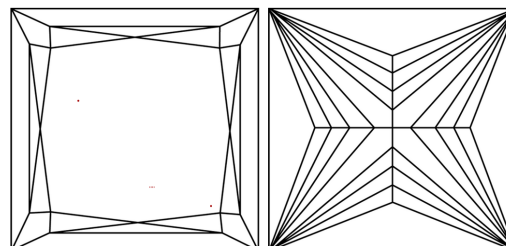
Sample Image Used



PROPORTIONS



CLARITY CHARACTERISTICS



KEY TO SYMBOLS

Red symbols indicate internal characteristics.
Green symbols indicate external characteristics.

COLOR

D E F G H I J Faint Very Light Light

CLARITY

IF	VS ¹⁻²	VS ¹⁻²	SI ¹⁻²	I ¹⁻³
Internally Flawless	Very Very Slightly Included	Very Slightly Included	Slightly Included	Included

ADDITIONAL GRADING INFORMATION

Polish **EXCELLENT**
Symmetry **EXCELLENT**
Fluorescence **NONE**
Inscription(s) **IGI LG649493310**
Comments: This Laboratory Grown Diamond was created by Chemical Vapor Deposition (CVD) growth process. Type IIa



IGI



August 24, 2024
IGI Report No LG649493310
PRINCESS CUT
8.71 X 8.66 X 6.23 MM
4.07 CARATS
D
VS 2
71.9%
71%
Medium
Pointed
EXCELLENT
EXCELLENT
NONE
IGI LG649493310
Comments: This Laboratory Grown Diamond was created by Chemical Vapor Deposition (CVD) growth process. Type IIa