



ELECTRONIC COPY

LG649496425
Report verification at igi.org



August 31, 2024
IGI Report Number **LG649496425**
Description **LABORATORY GROWN DIAMOND**
Shape and Cutting Style **CUSHION MODIFIED BRILLIANT**
Measurements **9.29 X 7.39 X 4.68 MM**
GRADING RESULTS
Carat Weight **2.84 CARATS**
Color Grade **FANCY VIVID PINK**
Clarity Grade **VVS 1**

LABORATORY GROWN DIAMOND REPORT

August 31, 2024
IGI Report Number **LG649496425**
Description **LABORATORY GROWN DIAMOND**
Shape and Cutting Style **CUSHION MODIFIED BRILLIANT**
Measurements **9.29 X 7.39 X 4.68 MM**

GRADING RESULTS

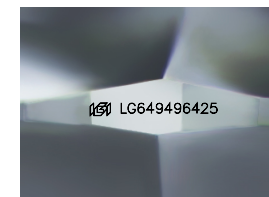
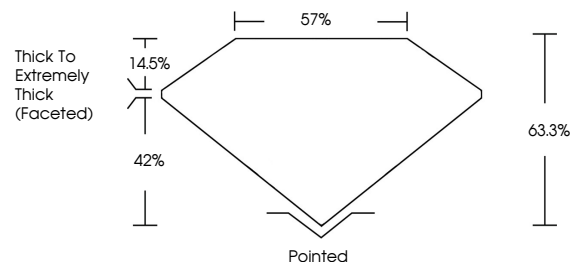
Carat Weight **2.84 CARATS**
Color Grade **FANCY VIVID PINK**
Clarity Grade **VVS 1**

ADDITIONAL GRADING INFORMATION

Polish **EXCELLENT**
Symmetry **EXCELLENT**
Fluorescence **SLIGHT**
Inscription(s) **IGI LG649496425**

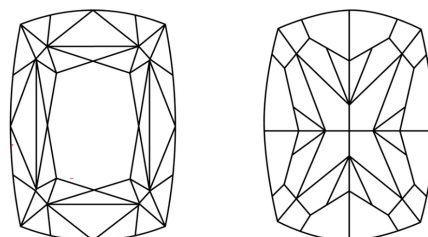
Comments: This Laboratory Grown Diamond was created by Chemical Vapor Deposition (CVD) growth process.
Indications of post-growth treatment.

PROPORTIONS



Sample Image Used

CLARITY CHARACTERISTICS



KEY TO SYMBOLS

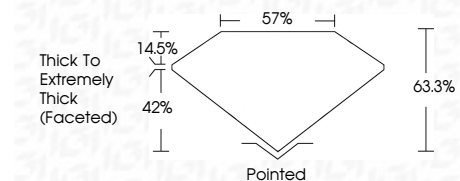
Red symbols indicate internal characteristics.
Green symbols indicate external characteristics.

COLOR

D E F G H I J Faint Very Light Light

CLARITY

IF	VS ¹⁻²	VS ¹⁻²	SI ¹⁻²	I ¹⁻³
Internally Flawless	Very Very Slightly Included	Very Slightly Included	Slightly Included	Included



ADDITIONAL GRADING INFORMATION

Polish **EXCELLENT**
Symmetry **EXCELLENT**
Fluorescence **SLIGHT**
Inscription(s) **IGI LG649496425**
Comments: This Laboratory Grown Diamond was created by Chemical Vapor Deposition (CVD) growth process.
Indications of post-growth treatment.



August 31, 2024
IGI Report No **LG649496425**
CUSHION MODIFIED BRILLIANT
9.29 X 7.39 X 4.68 MM
Carat Weight **2.84 CARATS**
Color Grade **FANCY VIVID PINK**
Clarity Grade **VVS 1**
Depth **63.3%**
Table **57%**
Girdle **Thick To Extremely Thick (Faceted)**
Culet **Pointed**
Polish **EXCELLENT**
Symmetry **EXCELLENT**
Fluorescence **SLIGHT**
Inscription(s) **IGI LG649496425**
Comments: This Laboratory Grown Diamond was created by Chemical Vapor Deposition (CVD) growth process.
Indications of post-growth treatment.