



**INTERNATIONAL
GEMOLOGICAL
INSTITUTE**

ELECTRONIC COPY

LG649499702



August 30, 2024
IGI Report Number LG649499702
ROUND BRILLIANT
LABORATORY GROWN DIAMOND
5.30 - 5.32 X 3.27 MM
 Carat Weight **0.56 CARAT**
 Color Grade **D**
 Clarity Grade **VVS 1**
 Cut Grade **IDEAL**
 Polish **EXCELLENT**
 Symmetry **EXCELLENT**
 Fluorescence **NONE**
 Inscription(s) **IGI LG649499702**
 Comments: HEARTS & ARROWS This Laboratory Grown Diamond was created by Chemical Vapor Deposition (CVD) growth process. Type IIa

LABORATORY GROWN DIAMOND REPORT

August 30, 2024
 IGI Report Number **LG649499702**
 Description **LABORATORY GROWN DIAMOND**
 Shape and Cutting Style **ROUND BRILLIANT**
 Measurements **5.30 - 5.32 X 3.27 MM**

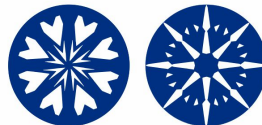
GRADING RESULTS

Carat Weight **0.56 CARAT**
 Color Grade **D**
 Clarity Grade **VVS 1**
 Cut Grade **IDEAL**

ADDITIONAL GRADING INFORMATION

Polish **EXCELLENT**
 Symmetry **EXCELLENT**
 Fluorescence **NONE**
 Inscription(s) **IGI LG649499702**

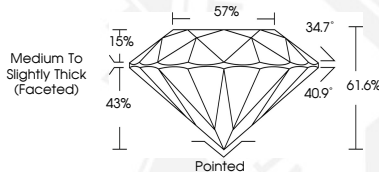
Comments: HEARTS & ARROWS
 This Laboratory Grown Diamond was created by Chemical Vapor Deposition (CVD) growth process. Type IIa



HEARTS & ARROWS



Sample Image Used



August 30, 2024
IGI Report Number LG649499702
ROUND BRILLIANT
LABORATORY GROWN DIAMOND
5.30 - 5.32 X 3.27 MM
 Carat Weight **0.56 CARAT**
 Color Grade **D**
 Clarity Grade **VVS 1**
 Cut Grade **IDEAL**
 Polish **EXCELLENT**
 Symmetry **EXCELLENT**
 Fluorescence **NONE**
 Inscription(s) **IGI LG649499702**
 Comments: HEARTS & ARROWS This Laboratory Grown Diamond was created by Chemical Vapor Deposition (CVD) growth process. Type IIa

THIS DOCUMENT WAS PRODUCED WITH THE FOLLOWING SECURITY MEASURES: SPECIAL DOCUMENT PAPER, INK SCREENS, WATERMARK, BACKGROUND DESIGN, HOLOGRAM AND OTHER SECURITY FEATURES NOT LISTED AND DO EXCEED DOCUMENT SECURITY INDUSTRY GUIDELINES.

For terms & conditions and to verify this report, please visit www.igi.org