



**INTERNATIONAL
GEMOLOGICAL
INSTITUTE**

ELECTRONIC COPY

LG650401781



September 4, 2024

IGI Report Number LG650401781
ROUND BRILLIANT
LABORATORY GROWN DIAMOND
4.53 - 4.55 X 2.85 MM

Carat Weight **0.36 CARAT**
Color Grade **D**
Clarity Grade **SI 1**
Cut Grade **EXCELLENT**
Polish **EXCELLENT**
Symmetry **EXCELLENT**
Fluorescence **NONE**
Inscription(s) **IGI LG650401781**

Comments: This Laboratory Grown Diamond was created by Chemical Vapor Deposition (CVD) growth process. Type IIa

LABORATORY GROWN DIAMOND REPORT

September 4, 2024
IGI Report Number **LG650401781**
Description **LABORATORY GROWN DIAMOND**
Shape and Cutting Style **ROUND BRILLIANT**
Measurements **4.53 - 4.55 X 2.85 MM**

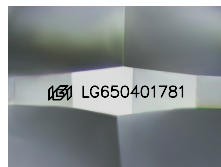
GRADING RESULTS

Carat Weight **0.36 CARAT**
Color Grade **D**
Clarity Grade **SI 1**
Cut Grade **EXCELLENT**

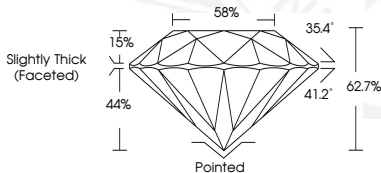
ADDITIONAL GRADING INFORMATION

Polish **EXCELLENT**
Symmetry **EXCELLENT**
Fluorescence **NONE**
Inscription(s) **IGI LG650401781**

Comments: This Laboratory Grown Diamond was created by Chemical Vapor Deposition (CVD) growth process. Type IIa



Sample Image Used



September 4, 2024

IGI Report Number LG650401781
ROUND BRILLIANT
LABORATORY GROWN DIAMOND
4.53 - 4.55 X 2.85 MM

Carat Weight **0.36 CARAT**
Color Grade **D**
Clarity Grade **SI 1**
Cut Grade **EXCELLENT**
Polish **EXCELLENT**
Symmetry **EXCELLENT**
Fluorescence **NONE**
Inscription(s) **IGI LG650401781**

Comments: This Laboratory Grown Diamond was created by Chemical Vapor Deposition (CVD) growth process. Type IIa

THIS DOCUMENT WAS PRODUCED WITH THE FOLLOWING SECURITY MEASURES: SPECIAL DOCUMENT PAPER, INK SCREENS, WATERMARK, BACKGROUND DESIGNS, HOLOGRAM AND OTHER SECURITY FEATURES NOT LISTED AND DO EXCEED DOCUMENT SECURITY INDUSTRY GUIDELINES.

For terms & conditions and to verify this report, please visit www.igi.org