



LG650402121



September 3, 2024

IGI Report Number **LG650402121**

EMERALD CUT

LABORATORY GROWN DIAMOND

6.37 X 4.26 X 2.89 MM

Carat Weight **0.76 CARAT**

Color Grade **D**

Clarity Grade **VVS 2**

Polish **EXCELLENT**

Symmetry **EXCELLENT**

Fluorescence **NONE**

Inscription(s) **IGI LG650402121**

Comments: This Laboratory Grown Diamond was created by Chemical Vapor Deposition (CVD) growth process. Type IIa

LABORATORY GROWN DIAMOND REPORT

September 3, 2024

IGI Report Number

LG650402121

Description

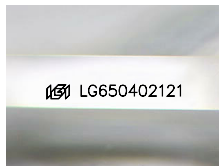
LABORATORY GROWN DIAMOND

Shape and Cutting Style

EMERALD CUT

Measurements

6.37 X 4.26 X 2.89 MM



Sample Image Used

GRADING RESULTS

Carat Weight

0.76 CARAT

Color Grade

D

Clarity Grade

VVS 2

ADDITIONAL GRADING INFORMATION

Polish

EXCELLENT

Symmetry

EXCELLENT

Fluorescence

NONE

Inscription(s)

IGI LG650402121

Comments: This Laboratory Grown Diamond was created by Chemical Vapor Deposition (CVD) growth process. Type IIa



September 3, 2024

IGI Report Number **LG650402121**

EMERALD CUT

LABORATORY GROWN DIAMOND

6.37 X 4.26 X 2.89 MM

Carat Weight **0.76 CARAT**

Color Grade **D**

Clarity Grade **VVS 2**

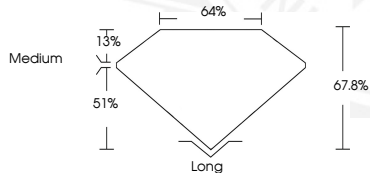
Polish **EXCELLENT**

Symmetry **EXCELLENT**

Fluorescence **NONE**

Inscription(s) **IGI LG650402121**

Comments: This Laboratory Grown Diamond was created by Chemical Vapor Deposition (CVD) growth process. Type IIa



THIS DOCUMENT WAS PRODUCED WITH THE FOLLOWING SECURITY MEASURES: SPECIAL DOCUMENT PAPER, INK SCREENS, WATERMARK, BACKGROUND DESIGN, HOLOGRAM AND OTHER SECURITY FEATURES NOT LISTED AND DO EXCEED DOCUMENT SECURITY INDUSTRY GUIDELINES.