



ELECTRONIC COPY

LG650402195
Report verification at igi.org



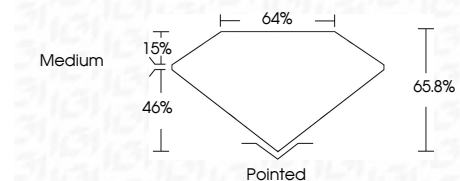
September 2, 2024
IGI Report Number LG650402195
Description LABORATORY GROWN DIAMOND

Shape and Cutting Style CUT CORNERED RECTANGULAR MODIFIED BRILLIANT

Measurements 10.01 X 6.98 X 4.59 MM

GRADING RESULTS

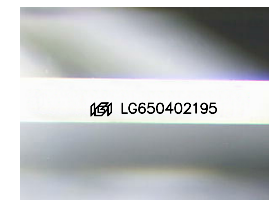
Carat Weight 2.87 CARATS
Color Grade E
Clarity Grade VS 1



ADDITIONAL GRADING INFORMATION

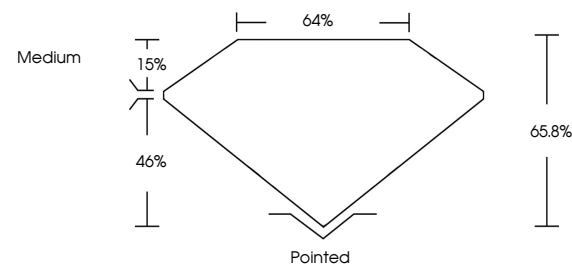
Polish EXCELLENT
Symmetry EXCELLENT
Fluorescence NONE
Inscription(s) IGI LG650402195

Comments: This Laboratory Grown Diamond was created by Chemical Vapor Deposition (CVD) growth process. Type IIa

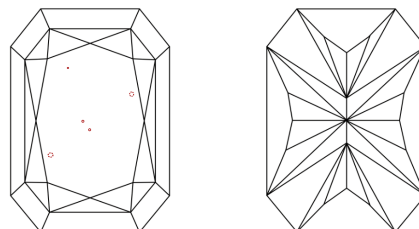


Sample Image Used

PROPORTIONS



CLARITY CHARACTERISTICS



KEY TO SYMBOLS

Red symbols indicate internal characteristics.
Green symbols indicate external characteristics.

COLOR

D E F G H I J Faint Very Light Light

CLARITY

IF WS 1-2 VS 1-2 SI 1-2 I 1-3
Internally Flawless Very Very Slightly Included Very Slightly Included Slightly Included Included



September 2, 2024
IGI Report No LG650402195
CUT CORNERED RECT. MODIFIED BRILLIANT
10.01 X 6.98 X 4.59 MM
2.87 CARATS
E
VS 1
65.8%
46%
Medium
Pointed
EXCELLENT
EXCELLENT
NONE
IGI LG650402195
Comments: This Laboratory Grown Diamond was created by Chemical Vapor Deposition (CVD) growth process. Type IIa