



ELECTRONIC COPY

LABORATORY GROWN DIAMOND REPORT

September 13, 2024  
IGI Report Number LG650402210  
Description LABORATORY GROWN DIAMOND  
Shape and Cutting Style EMERALD CUT  
Measurements 14.14 X 9.74 X 6.63 MM

GRADING RESULTS

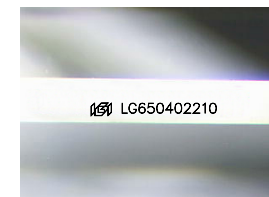
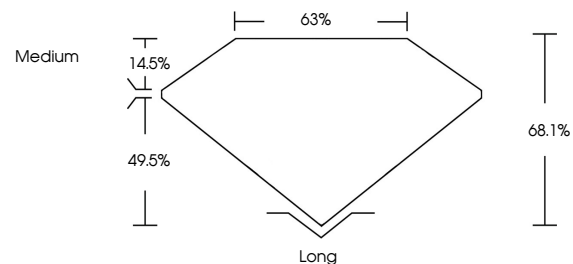
Carat Weight 9.17 CARATS  
Color Grade F  
Clarity Grade VVS 2

ADDITIONAL GRADING INFORMATION

Polish EXCELLENT  
Symmetry EXCELLENT  
Fluorescence NONE  
Inscription(s) IGI LG650402210

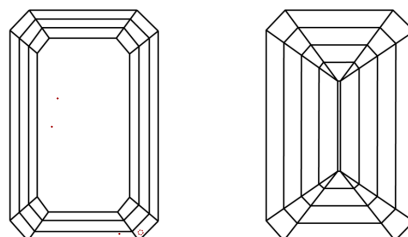
Comments: This Laboratory Grown Diamond was created by Chemical Vapor Deposition (CVD) growth process. Type IIa

PROPORTIONS



Sample Image Used

CLARITY CHARACTERISTICS



KEY TO SYMBOLS

Red symbols indicate internal characteristics.  
Green symbols indicate external characteristics.

COLOR

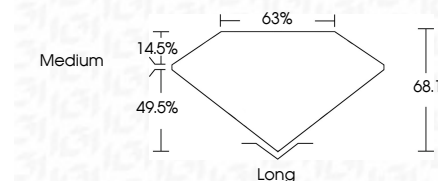
D E F G H I J Faint Very Light Light

CLARITY

IF VVS 1-2 VS 1-2 SI 1-2 I 1-3  
Internally Flawless Very Very Slightly Included Very Slightly Included Slightly Included Included



September 13, 2024  
IGI Report Number LG650402210  
Description LABORATORY GROWN DIAMOND  
Shape and Cutting Style EMERALD CUT  
Measurements 14.14 X 9.74 X 6.63 MM  
GRADING RESULTS  
Carat Weight 9.17 CARATS  
Color Grade F  
Clarity Grade VVS 2



ADDITIONAL GRADING INFORMATION

Polish EXCELLENT  
Symmetry EXCELLENT  
Fluorescence NONE  
Inscription(s) IGI LG650402210  
Comments: This Laboratory Grown Diamond was created by Chemical Vapor Deposition (CVD) growth process. Type IIa



IGI



September 13, 2024  
IGI Report No. LG650402210  
EMERALD CUT  
14.14 X 9.74 X 6.63 MM  
9.17 CARATS  
Color Grade F  
Clarity Grade VVS 2  
Depth 68.1%  
Table 63%  
Girdle Medium  
Culet Long  
Polish EXCELLENT  
Symmetry EXCELLENT  
Fluorescence NONE  
Inscription(s) IGI LG650402210  
Comments: This Laboratory Grown Diamond was created by Chemical Vapor Deposition (CVD) growth process. Type IIa