



**ELECTRONIC COPY**

LG650404593  
Report verification at igi.org



September 3, 2024  
IGI Report Number **LG650404593**  
Description **LABORATORY GROWN DIAMOND**  
Shape and Cutting Style **EMERALD CUT**  
Measurements **8.22 X 5.93 X 4.10 MM**

**GRADING RESULTS**

Carat Weight **2.05 CARATS**  
Color Grade **G**  
Clarity Grade **VS 1**

**LABORATORY GROWN DIAMOND REPORT**

September 3, 2024  
IGI Report Number **LG650404593**  
Description **LABORATORY GROWN DIAMOND**  
Shape and Cutting Style **EMERALD CUT**  
Measurements **8.22 X 5.93 X 4.10 MM**

**GRADING RESULTS**

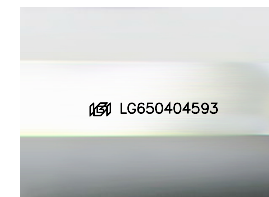
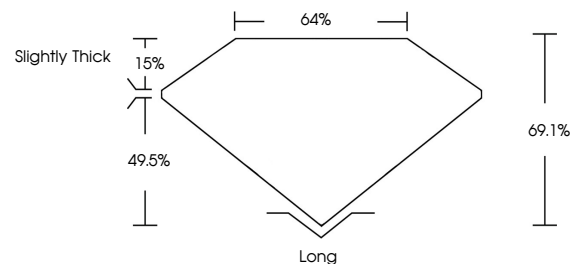
Carat Weight **2.05 CARATS**  
Color Grade **G**  
Clarity Grade **VS 1**

**ADDITIONAL GRADING INFORMATION**

Polish **EXCELLENT**  
Symmetry **EXCELLENT**  
Fluorescence **NONE**  
Inscription(s) **LG650404593**

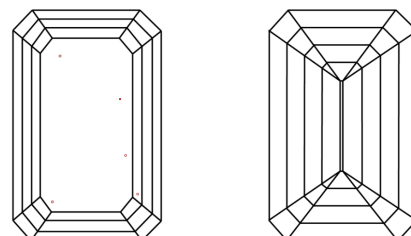
Comments: This Laboratory Grown Diamond was created by Chemical Vapor Deposition (CVD) growth process. Type IIa

**PROPORTIONS**



Sample Image Used

**CLARITY CHARACTERISTICS**



**KEY TO SYMBOLS**

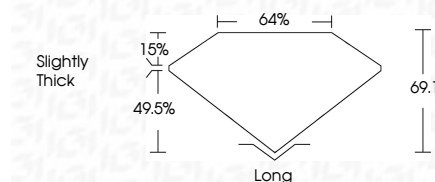
Red symbols indicate internal characteristics.  
Green symbols indicate external characteristics.

**COLOR**

D E F G H I J Faint Very Light Light

**CLARITY**

IF	VS <sup>1-2</sup>	VS <sup>1-2</sup>	SI <sup>1-2</sup>	I <sup>1-3</sup>
Internally Flawless	Very Very Slightly Included	Very Slightly Included	Slightly Included	Included



**ADDITIONAL GRADING INFORMATION**

Polish **EXCELLENT**  
Symmetry **EXCELLENT**  
Fluorescence **NONE**  
Inscription(s) **LG650404593**  
Comments: This Laboratory Grown Diamond was created by Chemical Vapor Deposition (CVD) growth process. Type IIa



**IGI**



September 3, 2024  
IGI Report No. **LG650404593**  
**EMERALD CUT**  
8.22 X 5.93 X 4.10 MM  
Carat Weight **2.05 CARATS**  
Color Grade **G**  
Clarity Grade **VS 1**  
Depth **69.1%**  
Table **64%**  
Girdle **Slightly Thick**  
Culet **Long**  
Polish **EXCELLENT**  
Symmetry **EXCELLENT**  
Fluorescence **NONE**  
Inscription(s) **LG650404593**  
Comments: This Laboratory Grown Diamond was created by Chemical Vapor Deposition (CVD) growth process. Type IIa