



ELECTRONIC COPY

LG650408199
Report verification at igi.org



September 19, 2024

IGI Report Number **LG650408199**

Description **LABORATORY GROWN DIAMOND**

Shape and Cutting Style **EMERALD CUT**

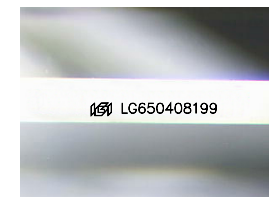
Measurements **7.09 X 5.16 X 3.33 MM**

GRADING RESULTS

Carat Weight **1.21 CARAT**

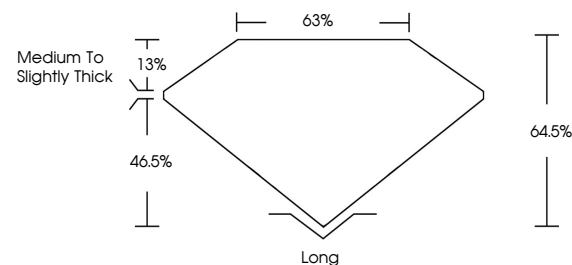
Color Grade **FANCY INTENSE PINK**

Clarity Grade **VS 1**

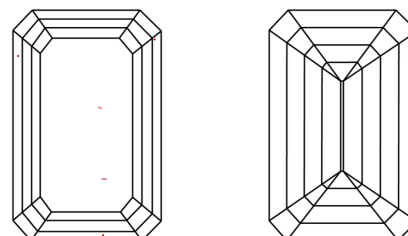


Sample Image Used

PROPORTIONS



CLARITY CHARACTERISTICS



KEY TO SYMBOLS

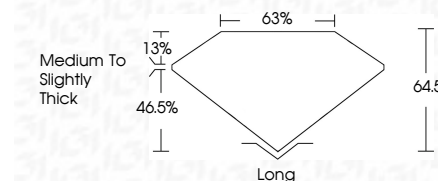
Red symbols indicate internal characteristics.
Green symbols indicate external characteristics.

COLOR

D E F G H I J Faint Very Light Light

CLARITY

IF	VS ¹⁻²	VS ¹⁻²	SI ¹⁻²	I ¹⁻³
Internally Flawless	Very Very Slightly Included	Very Slightly Included	Slightly Included	Included



ADDITIONAL GRADING INFORMATION

Polish **EXCELLENT**

Symmetry **VERY GOOD**

Fluorescence **VERY SLIGHT**

Inscription(s) **IGI LG650408199**

Comments: This Laboratory Grown Diamond was created by Chemical Vapor Deposition (CVD) growth process.

Indications of post-growth treatment.

Secondary color: Orange



IGI

September 19, 2024	IGI Report No. LG650408199	EMERALD CUT	1.21 CARAT	FANCY INTENSE PINK	VS 1	64.5%	63%	Medium to Slightly Thick	Long	EXCELLENT	VERY GOOD	VERY SLIGHT	IGI LG650408199
Carat Weight	Color Grade	Clarity Grade	Table	Girdle	Culet	Polish	Symmetry	Fluorescence	Inscription(s)	Comments: This Laboratory Grown Diamond was created by Chemical Vapor Deposition (CVD) growth process. Indications of post-growth treatment. Secondary color: Orange			

