



ELECTRONIC COPY

LG650409065 Report verification at igi.org



September 3, 2024 IGI Report Number LG650409065 Description LABORATORY GROWN DIAMOND Shape and Cutting Style CUT CORNERED RECTANGULAR MODIFIED BRILLIANT Measurements 9.34 X 6.24 X 4.08 MM GRADING RESULTS Carat Weight 2.13 CARATS Color Grade G Clarity Grade VS 1

LABORATORY GROWN DIAMOND REPORT

September 3, 2024 IGI Report Number LG650409065 Description LABORATORY GROWN DIAMOND Shape and Cutting Style CUT CORNERED RECTANGULAR MODIFIED BRILLIANT Measurements 9.34 X 6.24 X 4.08 MM

GRADING RESULTS

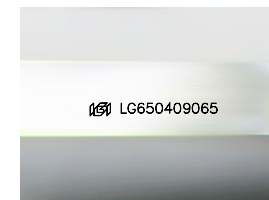
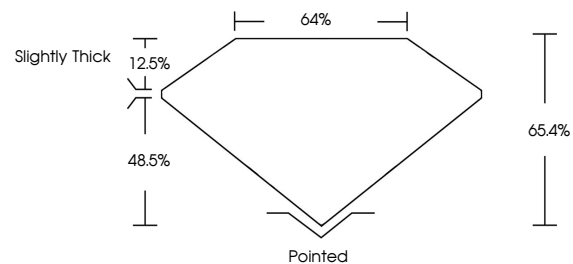
Carat Weight 2.13 CARATS Color Grade G Clarity Grade VS 1

ADDITIONAL GRADING INFORMATION

Polish EXCELLENT Symmetry EXCELLENT Fluorescence NONE Inscription(s) IGI LG650409065

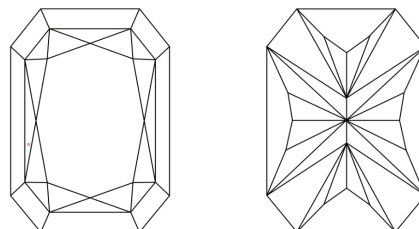
Comments: This Laboratory Grown Diamond was created by Chemical Vapor Deposition (CVD) growth process. Type IIa

PROPORTIONS



Sample Image Used

CLARITY CHARACTERISTICS



KEY TO SYMBOLS

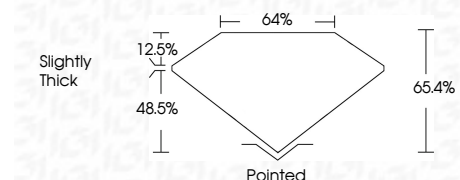
Red symbols indicate internal characteristics. Green symbols indicate external characteristics.

COLOR

D E F G H I J Faint Very Light Light

CLARITY

IF VS 1-2 VS 1-2 SI 1-2 I 1-3 Internally Flawless Very Very Slightly Included Very Slightly Included Slightly Included Included



ADDITIONAL GRADING INFORMATION

Polish EXCELLENT Symmetry EXCELLENT Fluorescence NONE Inscription(s) IGI LG650409065 Comments: This Laboratory Grown Diamond was created by Chemical Vapor Deposition (CVD) growth process. Type IIa



September 3, 2024 IGI Report No LG650409065 CUT CORNERED RECT. MODIFIED BRILLIANT 9.34 X 6.24 X 4.08 MM 2.13 CARATS G VS 1 65.4% 64% Slightly Thick Pointed EXCELLENT EXCELLENT NONE NONE IGI LG650409065 Comments: This Laboratory Grown Diamond was created by Chemical Vapor Deposition (CVD) growth process. Type IIa