



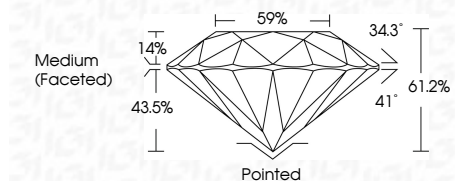
ELECTRONIC COPY

LG650411356 Report verification at igi.org



September 3, 2024 IGI Report Number LG650411356 Description LABORATORY GROWN DIAMOND Shape and Cutting Style ROUND BRILLIANT Measurements 7.48 - 7.50 X 4.58 MM

GRADING RESULTS Carat Weight 1.59 CARAT Color Grade F Clarity Grade VS 1 Cut Grade IDEAL



ADDITIONAL GRADING INFORMATION Polish EXCELLENT Symmetry EXCELLENT Fluorescence NONE Inscription(s) IGI LG650411356 Comments: This Laboratory Grown Diamond was created by Chemical Vapor Deposition (CVD) growth process. Type IIa



September 3, 2024 IGI Report No LG650411356 ROUND BRILLIANT 7.48 - 7.50 X 4.58 MM 1.59 CARAT F VS 1 IDEAL 61.2% 59% Medium (Faceted) Pointed EXCELLENT EXCELLENT NONE IGI LG650411356 Comments: This Laboratory Grown Diamond was created by Chemical Vapor Deposition (CVD) growth process. Type IIa

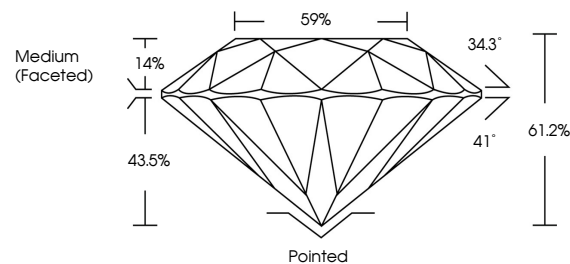
September 3, 2024 IGI Report Number LG650411356 Description LABORATORY GROWN DIAMOND Shape and Cutting Style ROUND BRILLIANT Measurements 7.48 - 7.50 X 4.58 MM

GRADING RESULTS Carat Weight 1.59 CARAT Color Grade F Clarity Grade VS 1 Cut Grade IDEAL

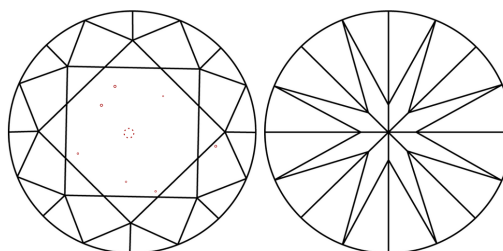
ADDITIONAL GRADING INFORMATION Polish EXCELLENT Symmetry EXCELLENT Fluorescence NONE Inscription(s) IGI LG650411356

Comments: This Laboratory Grown Diamond was created by Chemical Vapor Deposition (CVD) growth process. Type IIa

PROPORTIONS

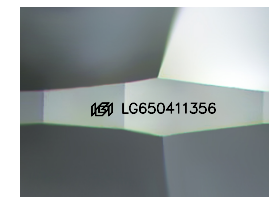


CLARITY CHARACTERISTICS



KEY TO SYMBOLS

Red symbols indicate internal characteristics. Green symbols indicate external characteristics.



Sample Image Used

COLOR

D E F G H I J Faint Very Light Light

CLARITY

IF WS 1-2 VS 1-2 SI 1-2 I 1-3 Internally Flawless Very Very Slightly Included Very Slightly Included Slightly Included Included

