



ELECTRONIC COPY

LG650411945
Report verification at igi.org



September 19, 2024

IGI Report Number **LG650411945**

Description **LABORATORY GROWN DIAMOND**

Shape and Cutting Style **SQUARE CUSHION BRILLIANT**

Measurements **8.12 X 8.02 X 5.41 MM**

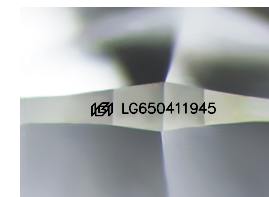
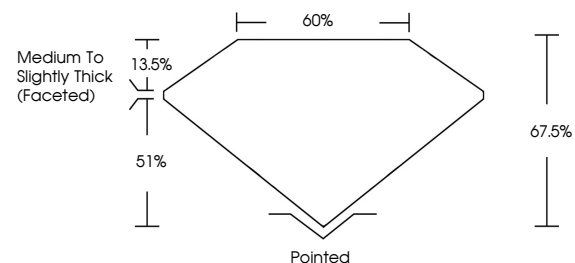
GRADING RESULTS

Carat Weight **2.90 CARATS**

Color Grade **F**

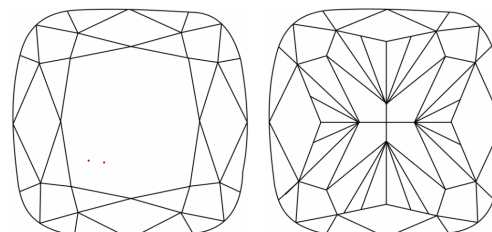
Clarity Grade **VVS 2**

PROPORTIONS



Sample Image Used

CLARITY CHARACTERISTICS



KEY TO SYMBOLS

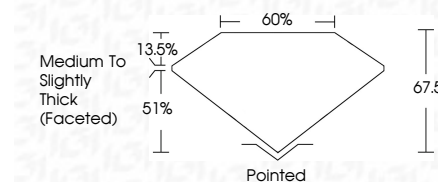
Red symbols indicate internal characteristics.
Green symbols indicate external characteristics.

COLOR

D E F G H I J Faint Very Light Light

CLARITY

IF	VS ¹⁻²	VS ¹⁻²	SI ¹⁻²	I ¹⁻³
Internally Flawless	Very Very Slightly Included	Very Slightly Included	Slightly Included	Included



ADDITIONAL GRADING INFORMATION

Polish **EXCELLENT**

Symmetry **EXCELLENT**

Fluorescence **NONE**

Inscription(s) **IGI LG650411945**

Comments: This Laboratory Grown Diamond was created by Chemical Vapor Deposition (CVD) growth process. Type IIa



IGI



September 19, 2024
IGI Report No LG650411945
SQUARE CUSHION BRILLIANT
8.12 X 8.02 X 5.41 MM
2.90 CARATS
F
VS 2
67.5%
51%
Medium to Slightly Thick (Faceted)
Pointed
EXCELLENT
EXCELLENT
NONE
IGI LG650411945

Comments: This Laboratory Grown Diamond was created by Chemical Vapor Deposition (CVD) growth process. Type IIa