



ELECTRONIC COPY

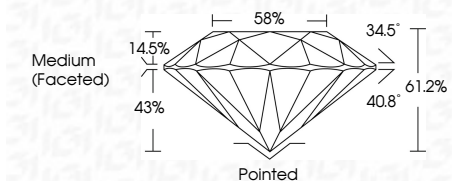
LG650412035 Report verification at igi.org



September 5, 2024 IGI Report Number LG650412035 Description LABORATORY GROWN DIAMOND Shape and Cutting Style ROUND BRILLIANT Measurements 6.62 - 6.63 X 4.05 MM

GRADING RESULTS

Carat Weight 1.09 CARAT Color Grade D Clarity Grade VVS 1 Cut Grade IDEAL



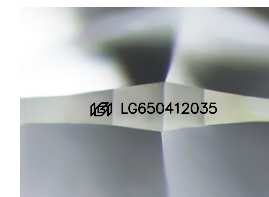
ADDITIONAL GRADING INFORMATION

Polish EXCELLENT Symmetry EXCELLENT Fluorescence NONE Inscription(s) IGI LG650412035 Comments: HEARTS & ARROWS As Grown - No indication of post-growth treatment. This Laboratory Grown Diamond was created by High Pressure High Temperature (HPHT) growth process. Type II



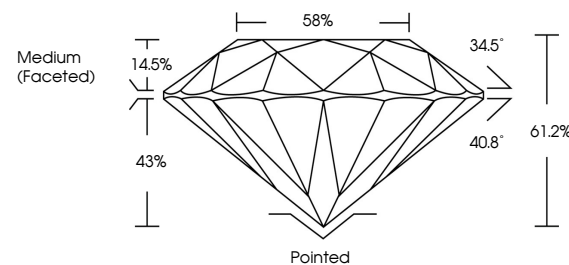
IGI

September 5, 2024 IGI Report No LG650412035 ROUND BRILLIANT 6.62 - 6.63 X 4.05 MM 1.09 CARAT D VVS 1 IDEAL 61.2% 58% Medium (Faceted) Pointed EXCELLENT EXCELLENT NONE IGI LG650412035 Comments: HEARTS & ARROWS As Grown - No indication of post-growth treatment. This Laboratory Grown Diamond was created by High Pressure High Temperature (HPHT) growth process. Type II

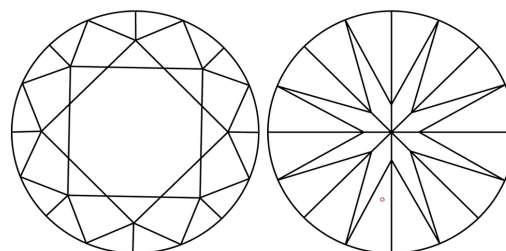


Sample Image Used

PROPORTIONS

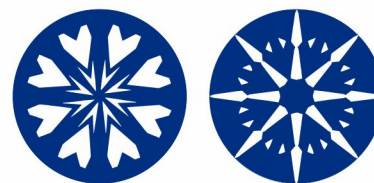


CLARITY CHARACTERISTICS



KEY TO SYMBOLS

Red symbols indicate internal characteristics. Green symbols indicate external characteristics.



COLOR

D E F G H I J Faint Very Light Light

CLARITY

IF VS 1-2 VS 1-2 SI 1-2 I 1-3

Internally Flawless Very Very Slightly Included Very Slightly Included Slightly Included Included



September 5, 2024 IGI Report Number LG650412035 Description LABORATORY GROWN DIAMOND Shape and Cutting Style ROUND BRILLIANT Measurements 6.62 - 6.63 X 4.05 MM

GRADING RESULTS

Carat Weight 1.09 CARAT Color Grade D Clarity Grade VVS 1 Cut Grade IDEAL

ADDITIONAL GRADING INFORMATION

Polish EXCELLENT Symmetry EXCELLENT Fluorescence NONE Inscription(s) IGI LG650412035

Comments: HEARTS & ARROWS As Grown - No indication of post-growth treatment. This Laboratory Grown Diamond was created by High Pressure High Temperature (HPHT) growth process. Type II