



ELECTRONIC COPY

LG650413495 Report verification at igi.org



September 5, 2024 IGI Report Number LG650413495 Description LABORATORY GROWN DIAMOND

Shape and Cutting Style CUT CORNERED RECTANGULAR MODIFIED BRILLIANT

Measurements 8.98 X 6.23 X 4.06 MM

GRADING RESULTS

Carat Weight 1.94 CARAT Color Grade F Clarity Grade VS 1

LABORATORY GROWN DIAMOND REPORT

September 5, 2024 IGI Report Number LG650413495 Description LABORATORY GROWN DIAMOND Shape and Cutting Style CUT CORNERED RECTANGULAR MODIFIED BRILLIANT Measurements 8.98 X 6.23 X 4.06 MM

GRADING RESULTS

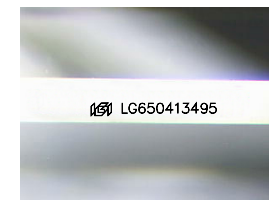
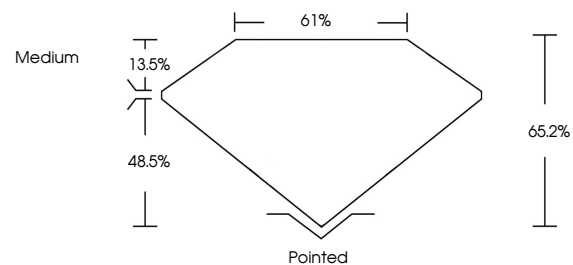
Carat Weight 1.94 CARAT Color Grade F Clarity Grade VS 1

ADDITIONAL GRADING INFORMATION

Polish EXCELLENT Symmetry EXCELLENT Fluorescence NONE Inscription(s) LG650413495

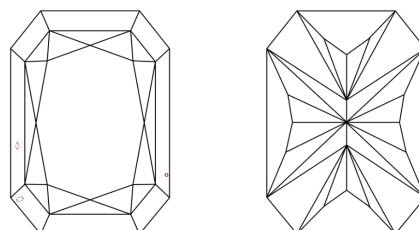
Comments: This Laboratory Grown Diamond was created by Chemical Vapor Deposition (CVD) growth process. Type IIa

PROPORTIONS



Sample Image Used

CLARITY CHARACTERISTICS



KEY TO SYMBOLS

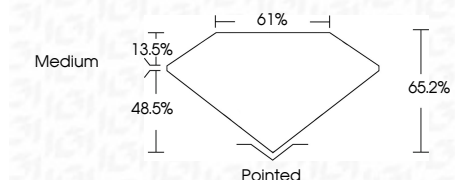
Red symbols indicate internal characteristics. Green symbols indicate external characteristics.

COLOR

D E F G H I J Faint Very Light Light

CLARITY

IF WS 1-2 VS 1-2 SI 1-2 I 1-3 Internally Flawless Very Very Slightly Included Very Slightly Included Slightly Included Included



ADDITIONAL GRADING INFORMATION

Polish EXCELLENT Symmetry EXCELLENT Fluorescence NONE Inscription(s) LG650413495 Comments: This Laboratory Grown Diamond was created by Chemical Vapor Deposition (CVD) growth process. Type IIa



IGI



September 5, 2024 IGI Report No LG650413495 CUT CORNERED RECT. MODIFIED BRILLIANT 1.94 CARAT F VS 1 65.2% 61% Medium Pointed EXCELLENT EXCELLENT NONE LG650413495 Comments: This Laboratory Grown Diamond was created by Chemical Vapor Deposition (CVD) growth process. Type IIa