



ELECTRONIC COPY

LG650415542
Report verification at igi.org



September 9, 2024

IGI Report Number **LG650415542**

Description **LABORATORY GROWN DIAMOND**

Shape and Cutting Style **ROUND BRILLIANT**

Measurements **9.29 - 9.37 X 5.58 MM**

GRADING RESULTS

Carat Weight **3.01 CARATS**

Color Grade **D**

Clarity Grade **SI 1**

Cut Grade **EXCELLENT**

September 9, 2024
IGI Report Number **LG650415542**
Description **LABORATORY GROWN DIAMOND**
Shape and Cutting Style **ROUND BRILLIANT**
Measurements **9.29 - 9.37 X 5.58 MM**

GRADING RESULTS

Carat Weight **3.01 CARATS**

Color Grade **D**

Clarity Grade **SI 1**

Cut Grade **EXCELLENT**

ADDITIONAL GRADING INFORMATION

Polish **EXCELLENT**

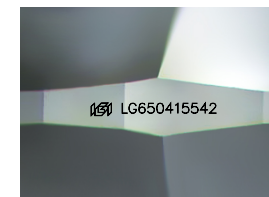
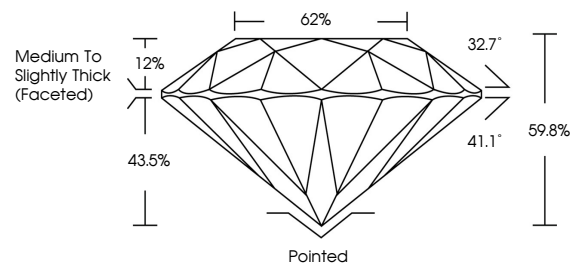
Symmetry **EXCELLENT**

Fluorescence **NONE**

Inscription(s) **IGI LG650415542**

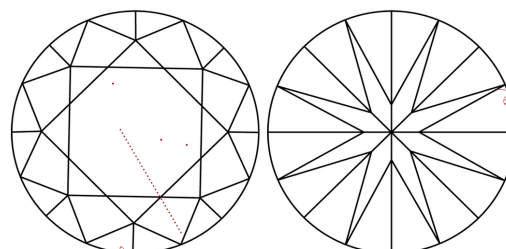
Comments: This Laboratory Grown Diamond was created by Chemical Vapor Deposition (CVD) growth process.
Type IIa

PROPORTIONS



Sample Image Used

CLARITY CHARACTERISTICS



KEY TO SYMBOLS

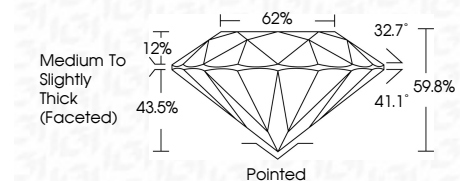
Red symbols indicate internal characteristics.
Green symbols indicate external characteristics.

COLOR

D E F G H I J Faint Very Light Light

CLARITY

IF	VS ¹⁻²	VS ¹⁻²	SI ¹⁻²	I ¹⁻³
Internally Flawless	Very Very Slightly Included	Very Slightly Included	Slightly Included	Included



ADDITIONAL GRADING INFORMATION

Polish **EXCELLENT**

Symmetry **EXCELLENT**

Fluorescence **NONE**

Inscription(s) **IGI LG650415542**

Comments: This Laboratory Grown Diamond was created by Chemical Vapor Deposition (CVD) growth process.
Type IIa



September 9, 2024
IGI Report No LG650415542
ROUND BRILLIANT

3.01 CARATS
D
Color Grade **EXCELLENT**
SI 1
Clarity Grade **EXCELLENT**
9.29 - 9.37 X 5.58 MM
Depth 43.5%
Table 12%
Girdle 62%
Medium To Slightly Thick (Faceted)

Pointed
Polish **EXCELLENT**
Symmetry **EXCELLENT**
Fluorescence **NONE**
Inscriptions(s) **IGI LG650415542**

Comments: This Laboratory Grown Diamond was created by Chemical Vapor Deposition (CVD) growth process.
Type IIa