



ELECTRONIC COPY

LG650418489
Report verification at igi.org



October 7, 2024

IGI Report Number **LG650418489**

Description **LABORATORY GROWN DIAMOND**

Shape and Cutting Style **PRINCESS CUT**

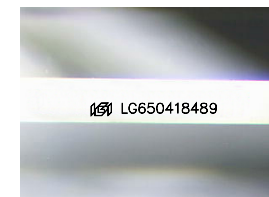
Measurements **8.57 X 8.49 X 6.13 MM**

GRADING RESULTS

Carat Weight **4.03 CARATS**

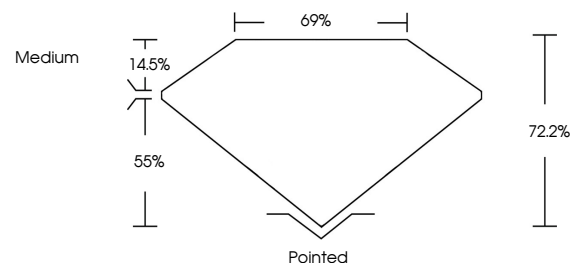
Color Grade **F**

Clarity Grade **VS 1**

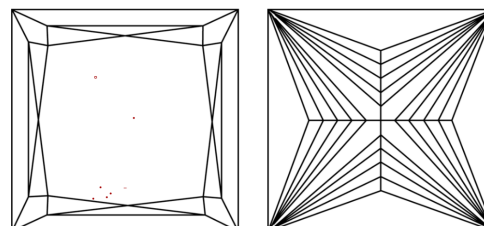


Sample Image Used

PROPORTIONS



CLARITY CHARACTERISTICS



KEY TO SYMBOLS

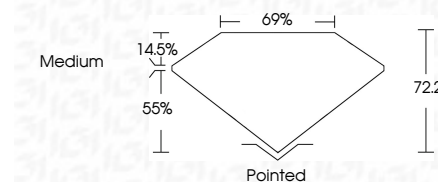
Red symbols indicate internal characteristics.
Green symbols indicate external characteristics.

COLOR

D E F G H I J Faint Very Light Light

CLARITY

IF	VS ¹⁻²	VS ¹⁻²	SI ¹⁻²	I ¹⁻³
Internally Flawless	Very Very Slightly Included	Very Slightly Included	Slightly Included	Included



ADDITIONAL GRADING INFORMATION

Polish **EXCELLENT**

Symmetry **EXCELLENT**

Fluorescence **NONE**

Inscription(s) **IGI LG650418489**

Comments: This Laboratory Grown Diamond was created by Chemical Vapor Deposition (CVD) growth process.
Type IIa



IGI



October 7, 2024
IGI Report No. LG650418489
PRINCESS CUT

8.57 X 8.49 X 6.13 MM

4.03 CARATS
F

Carat Weight
Color Grade
Clarity Grade
Table
Depth
Girdle
Medium

VS 1
72.2%
69%
Pointed
EXCELLENT
EXCELLENT
NONE
IGI LG650418489

Culet
Polish
Symmetry
Fluorescence
Inscription(s)

Comments: This Laboratory Grown Diamond was created by Chemical Vapor Deposition (CVD) growth process.
Type IIa