



ELECTRONIC COPY

LABORATORY GROWN DIAMOND REPORT

October 7, 2024  
IGI Report Number LG650418490  
Description LABORATORY GROWN DIAMOND  
Shape and Cutting Style PRINCESS CUT  
Measurements 8.73 X 8.70 X 5.97 MM

GRADING RESULTS

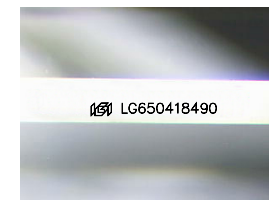
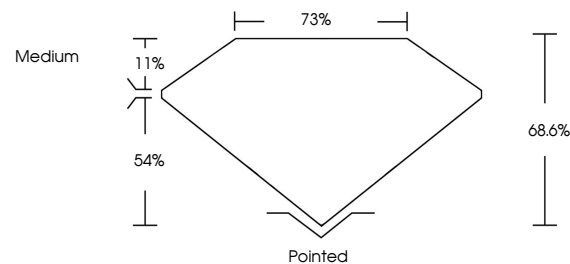
Carat Weight 4.03 CARATS  
Color Grade F  
Clarity Grade VS 1

ADDITIONAL GRADING INFORMATION

Polish EXCELLENT  
Symmetry VERY GOOD  
Fluorescence NONE  
Inscription(s) IGI LG650418490

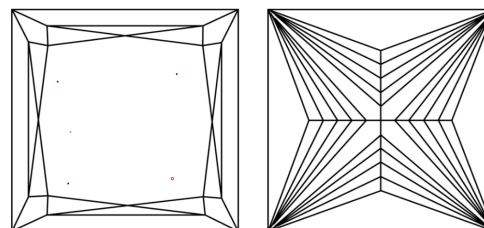
Comments: This Laboratory Grown Diamond was created by Chemical Vapor Deposition (CVD) growth process. Type IIa

PROPORTIONS



Sample Image Used

CLARITY CHARACTERISTICS



KEY TO SYMBOLS

Red symbols indicate internal characteristics.  
Green symbols indicate external characteristics.

COLOR

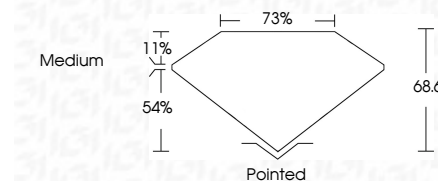
D E F G H I J Faint Very Light Light

CLARITY

IF VS 1-2 VS 1-2 SI 1-2 I 1-3  
Internally Flawless Very Very Slightly Included Very Slightly Included Slightly Included Included



October 7, 2024  
IGI Report Number LG650418490  
Description LABORATORY GROWN DIAMOND  
Shape and Cutting Style PRINCESS CUT  
Measurements 8.73 X 8.70 X 5.97 MM  
GRADING RESULTS  
Carat Weight 4.03 CARATS  
Color Grade F  
Clarity Grade VS 1



ADDITIONAL GRADING INFORMATION

Polish EXCELLENT  
Symmetry VERY GOOD  
Fluorescence NONE  
Inscription(s) IGI LG650418490  
Comments: This Laboratory Grown Diamond was created by Chemical Vapor Deposition (CVD) growth process. Type IIa



IGI



October 7, 2024  
IGI Report No LG650418490  
PRINCESS CUT  
4.03 CARATS F  
8.73 X 8.70 X 5.97 MM  
Carat Weight  
Color Grade  
Clarity Grade VS 1  
Depth 68.6%  
Table 73%  
Girdle  
Medium  
Pointed  
EXCELLENT  
VERY GOOD  
NONE  
IGI LG650418490  
Inscription(s)  
Comments: This Laboratory Grown Diamond was created by Chemical Vapor Deposition (CVD) growth process. Type IIa