



ELECTRONIC COPY

LG650418509
Report verification at igi.org



October 7, 2024

IGI Report Number **LG650418509**

Description **LABORATORY GROWN DIAMOND**

Shape and Cutting Style **PRINCESS CUT**

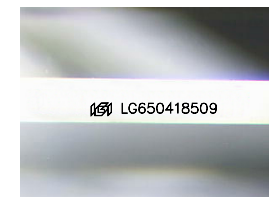
Measurements **8.66 X 8.64 X 5.98 MM**

GRADING RESULTS

Carat Weight **4.04 CARATS**

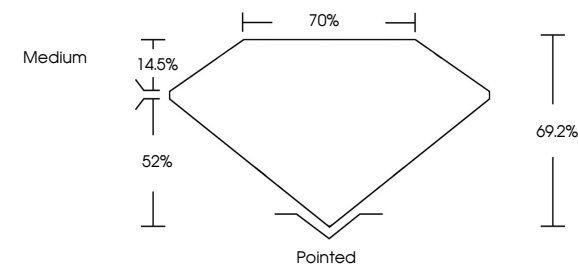
Color Grade **F**

Clarity Grade **VS 1**

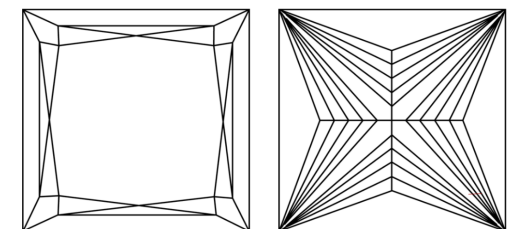


Sample Image Used

PROPORTIONS



CLARITY CHARACTERISTICS



KEY TO SYMBOLS

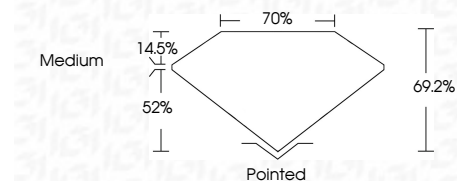
Red symbols indicate internal characteristics.
Green symbols indicate external characteristics.

COLOR

D	E	F	G	H	I	J	Faint	Very Light	Light
---	---	---	---	---	---	---	-------	------------	-------

CLARITY

IF	VS ¹⁻²	VS ¹⁻²	SI ¹⁻²	I ¹⁻³
Internally Flawless	Very Very Slightly Included	Very Slightly Included	Slightly Included	Included



ADDITIONAL GRADING INFORMATION

Polish **EXCELLENT**

Symmetry **EXCELLENT**

Fluorescence **NONE**

Inscription(s) **IGI LG650418509**

Comments: This Laboratory Grown Diamond was created by Chemical Vapor Deposition (CVD) growth process.
Type IIa



IGI



October 7, 2024
IGI Report No LG650418509
PRINCESS CUT

4.04 CARATS
F

8.66 X 8.64 X 5.98 MM
4.04 CARATS
Color Grade
F
Clarity Grade
VS 1
Depth
52%
Table
70%
Girdle
Medium
Pointed
EXCELLENT
EXCELLENT
NONE
IGI LG650418509

Comments: This Laboratory Grown Diamond was created by Chemical Vapor Deposition (CVD) growth process.
Type IIa