



**ELECTRONIC COPY**

LG650418586  
Report verification at [igi.org](http://igi.org)



October 7, 2024

IGI Report Number **LG650418586**

Description **LABORATORY GROWN DIAMOND**

Shape and Cutting Style **ROUND BRILLIANT**

Measurements **9.28 - 9.33 X 5.60 MM**

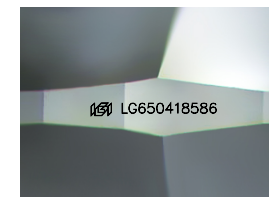
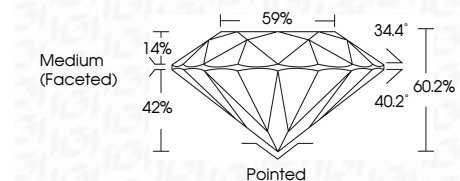
**GRADING RESULTS**

Carat Weight **3.01 CARATS**

Color Grade **F**

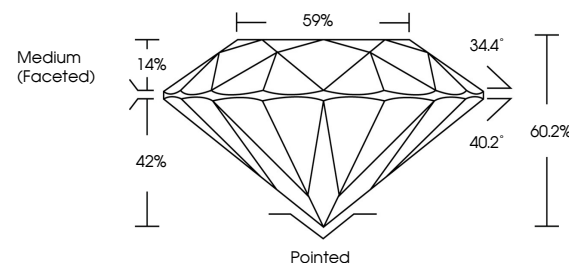
Clarity Grade **VVS 2**

Cut Grade **IDEAL**

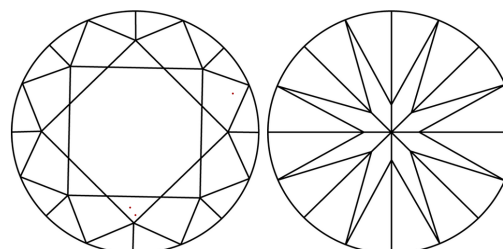


Sample Image Used

**PROPORTIONS**



**CLARITY CHARACTERISTICS**



**KEY TO SYMBOLS**

Red symbols indicate internal characteristics.  
Green symbols indicate external characteristics.

**COLOR**

D E F G H I J Faint Very Light Light

**CLARITY**

IF	VS <sup>1-2</sup>	VS <sup>1-2</sup>	SI <sup>1-2</sup>	I <sup>1-3</sup>
Internally Flawless	Very Very Slightly Included	Very Slightly Included	Slightly Included	Included

**ADDITIONAL GRADING INFORMATION**

Polish **EXCELLENT**

Symmetry **EXCELLENT**

Fluorescence **NONE**

Inscription(s) **IGI LG650418586**

Comments: This Laboratory Grown Diamond was created by Chemical Vapor Deposition (CVD) growth process. Type IIa



**IGI**



October 7, 2024	IGI Report No LG650418586	3.01 CARATS	F	VVS 2	IDEAL	60.2%	59%	Medium (Faceted)	Pointed	EXCELLENT	EXCELLENT	NONE	IGI LG650418586
ROUND BRILLIANT	9.28 - 9.33 X 5.60 MM	Color Grade	Cut Grade	Depth	Table	Girdle							

Comments: This Laboratory Grown Diamond was created by Chemical Vapor Deposition (CVD) growth process. Type IIa