



**ELECTRONIC COPY**

LG650418912  
Report verification at igi.org



October 5, 2024

IGI Report Number **LG650418912**

Description **LABORATORY GROWN DIAMOND**

Shape and Cutting Style **PRINCESS CUT**

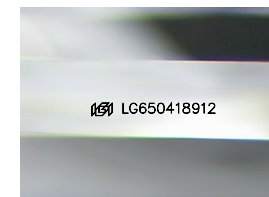
Measurements **6.94 X 6.82 X 4.83 MM**

**GRADING RESULTS**

Carat Weight **2.04 CARATS**

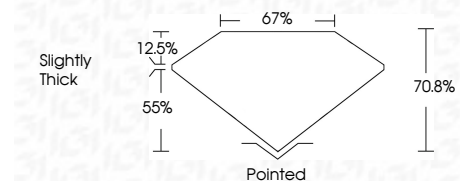
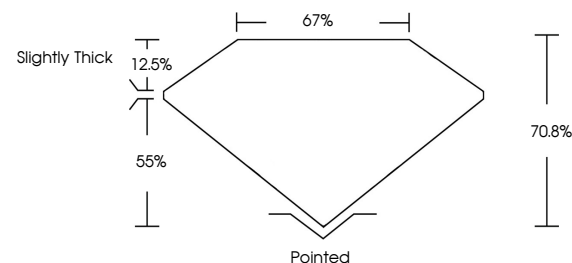
Color Grade **G**

Clarity Grade **VS 1**

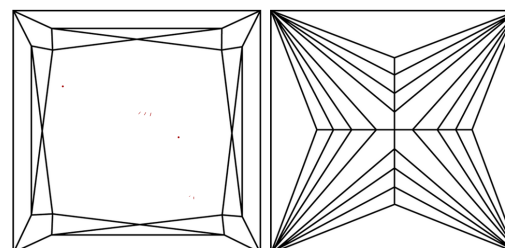


Sample Image Used

**PROPORTIONS**



**CLARITY CHARACTERISTICS**



**KEY TO SYMBOLS**

Red symbols indicate internal characteristics.  
Green symbols indicate external characteristics.

**COLOR**

D E F G H I J Faint Very Light Light

**CLARITY**

IF	VS <sup>1-2</sup>	VS <sup>1-2</sup>	SI <sup>1-2</sup>	I <sup>1-3</sup>
Internally Flawless	Very Very Slightly Included	Very Slightly Included	Slightly Included	Included

**ADDITIONAL GRADING INFORMATION**

Polish **EXCELLENT**

Symmetry **EXCELLENT**

Fluorescence **NONE**

Inscription(s) **IGI LG650418912**

Comments: This Laboratory Grown Diamond was created by Chemical Vapor Deposition (CVD) growth process.  
Type IIa



**IGI**

October 5, 2024  
IGI Report No LG650418912  
PRINCESS CUT

6.94 X 6.82 X 4.83 MM

2.04 CARATS  
Color Grade G  
Clarity Grade VS 1  
Depth 70.8%  
Table 67%  
Girdle Slightly Thick

Culet Pointed  
Polish EXCELLENT  
Symmetry EXCELLENT  
Fluorescence NONE  
Inscription(s) IGI LG650418912

Comments: This Laboratory Grown Diamond was created by Chemical Vapor Deposition (CVD) growth process.  
Type IIa

