



ELECTRONIC COPY

LG650419047
Report verification at igi.org



October 4, 2024

IGI Report Number **LG650419047**

Description **LABORATORY GROWN DIAMOND**

Shape and Cutting Style **PRINCESS CUT**

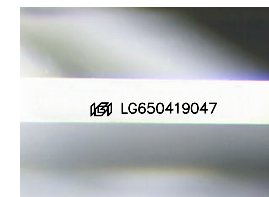
Measurements **8.73 X 8.66 X 6.10 MM**

GRADING RESULTS

Carat Weight **4.07 CARATS**

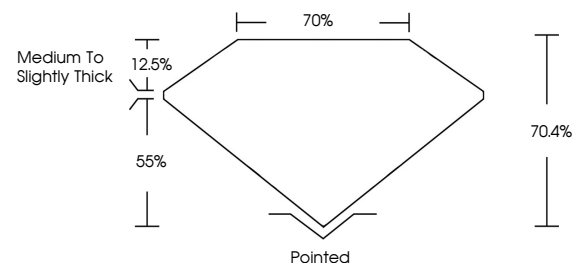
Color Grade **F**

Clarity Grade **VS 1**

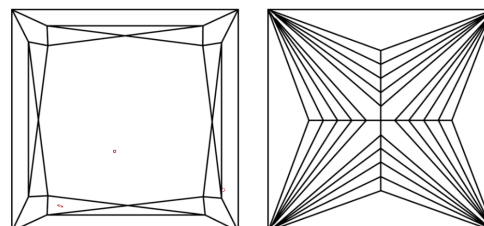


Sample Image Used

PROPORTIONS



CLARITY CHARACTERISTICS



KEY TO SYMBOLS

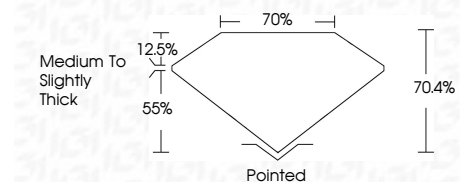
Red symbols indicate internal characteristics.
Green symbols indicate external characteristics.

COLOR

D E F G H I J Faint Very Light Light

CLARITY

IF	VS ¹⁻²	VS ¹⁻²	SI ¹⁻²	I ¹⁻³
Internally Flawless	Very Very Slightly Included	Very Slightly Included	Slightly Included	Included



ADDITIONAL GRADING INFORMATION

Polish **EXCELLENT**

Symmetry **VERY GOOD**

Fluorescence **NONE**

Inscription(s) **IGI LG650419047**

Comments: This Laboratory Grown Diamond was created by Chemical Vapor Deposition (CVD) growth process.
Type IIa



IGI



October 4, 2024
IGI Report No LG650419047
PRINCESS CUT

8.73 X 8.66 X 6.10 MM

4.07 CARATS
F

Carat Weight
Color Grade
Clarity Grade
Table
Girdle
Medium to Slightly Thick

70.4%
70%
Pointed

EXCELLENT
VERY GOOD
NONE

IGI LG650419047

Comments: This Laboratory Grown Diamond was created by Chemical Vapor Deposition (CVD) growth process.
Type IIa