



ELECTRONIC COPY

LG650475683
Report verification at igi.org

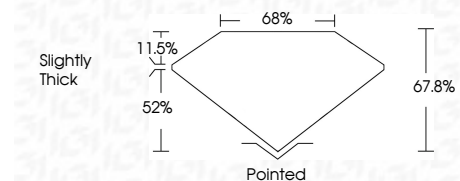


August 30, 2024
IGI Report Number **LG650475683**
Description **LABORATORY GROWN DIAMOND**

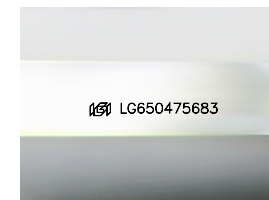
Shape and Cutting Style **CUT CORNERED
RECTANGULAR MODIFIED
BRILLIANT**

Measurements **10.04 X 7.20 X 4.88 MM**

GRADING RESULTS
Carat Weight **3.02 CARATS**
Color Grade **G**
Clarity Grade **VS 2**

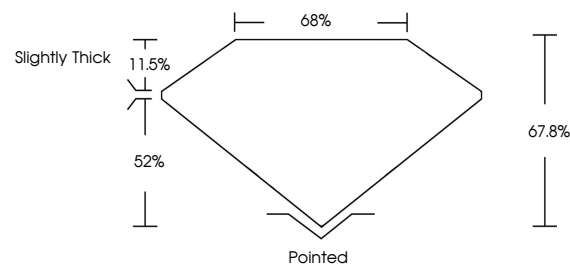


ADDITIONAL GRADING INFORMATION
Polish **EXCELLENT**
Symmetry **EXCELLENT**
Fluorescence **NONE**
Inscription(s) **IGI LG650475683**
Comments: This Laboratory Grown Diamond was created by Chemical Vapor Deposition (CVD) growth process. Type IIa

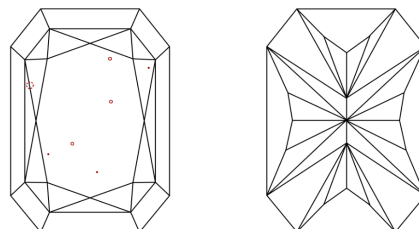


Sample Image Used

PROPORTIONS



CLARITY CHARACTERISTICS



KEY TO SYMBOLS

Red symbols indicate internal characteristics.
Green symbols indicate external characteristics.

COLOR

D E F G H I J Faint Very Light Light

CLARITY

IF	VS ¹⁻²	VS ¹⁻²	SI ¹⁻²	I ¹⁻³
Internally Flawless	Very Very Slightly Included	Very Slightly Included	Slightly Included	Included



August 30, 2024
IGI Report No LG650475683
CUT CORNERED RECT. MODIFIED BRILLIANT
10.04 X 7.20 X 4.88 MM
3.02 CARATS
G
Color Grade
VS 2
Depth 67.0%
Table 52%
Girdle Slightly Thick
Culet Pointed
Polish EXCELLENT
Symmetry EXCELLENT
Fluorescence NONE
Inscription(s) IGI LG650475683
Comments: This Laboratory Grown Diamond was created by Chemical Vapor Deposition (CVD) growth process. Type IIa