

ELECTRONIC COPY

LABORATORY GROWN DIAMOND REPORT

August 31, 2024	
IGI Report Number	LG650490580
Description	LABORATORY GROWN DIAMOND
Shape and Cutting Style	CUT CORNERED RECTANGULAR MODIFIED BRILLIANT
Measurements	7.41 X 5.04 X 3.36 MM

GRADING RESULTS

Carat Weight	1.08 CARAT
Color Grade	H
Clarity Grade	VVS 2

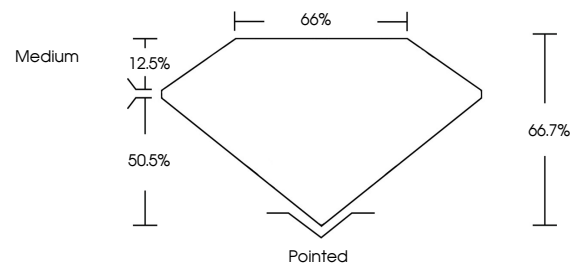
ADDITIONAL GRADING INFORMATION

Polish	EXCELLENT
Symmetry	EXCELLENT
Fluorescence	NONE
Inscription(s)	 LG650490580

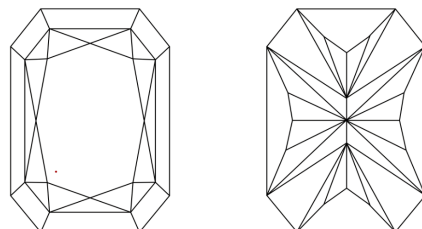
Comments: This Laboratory Grown Diamond was created by Chemical Vapor Deposition (CVD) growth process.
Type IIa

LG650490580
Report verification at igi.org

PROPORTIONS

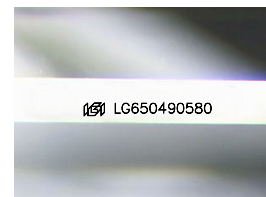


CLARITY CHARACTERISTICS



KEY TO SYMBOLS

Red symbols indicate internal characteristics.
Green symbols indicate external characteristics.



Sample Image Used

COLOR

D E F G H I J Faint Very Light Light

CLARITY

IF	VS ¹⁻²	VS ¹⁻²	SI ¹⁻²	I ¹⁻³
Internally Flawless	Very Very Slightly Included	Very Slightly Included	Slightly Included	Included

LABORATORY GROWN DIAMOND REPORT

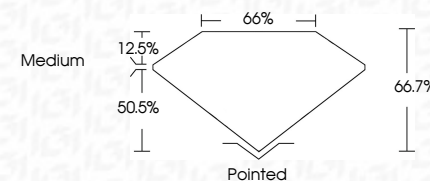


August 31, 2024	
IGI Report Number	LG650490580
Description	LABORATORY GROWN DIAMOND
Shape and Cutting Style	CUT CORNERED RECTANGULAR MODIFIED BRILLIANT

Measurements **7.41 X 5.04 X 3.36 MM**

GRADING RESULTS

Carat Weight	1.08 CARAT
Color Grade	H
Clarity Grade	VVS 2



ADDITIONAL GRADING INFORMATION

Polish	EXCELLENT
Symmetry	EXCELLENT
Fluorescence	NONE
Inscription(s)	 LG6650490580
Comments: This Laboratory Grown Diamond was created by Chemical Vapor Deposition (CVD) growth process.	
Type IIa	



© IGI 2020, International Gemological Institute

FD - 10 20

August 31, 2024	GI Report No. LG550400580
CUT CORNERED RECT. MODIFIED BRILLIANT	
1.08 CARAT	1.08 CARAT
H	H
VVS 2	VVS 2
66.7%	66.7%
65%	65%
Medium	Medium
Pointed	Pointed
EXCELLENT	EXCELLENT
EXCELLENT	EXCELLENT
NONE	NONE
1691 LG550400580	1691 LG550400580

Comments: This is a Very Good Diamond was created by Chemical Vapor Deposition (CVD) growth process.

Type IIA