



**ELECTRONIC COPY**

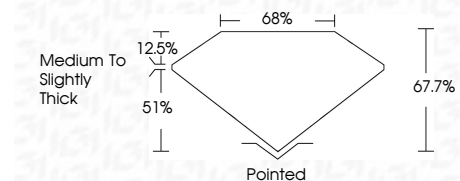
LG650493037  
Report verification at igi.org



September 16, 2024  
IGI Report Number **LG650493037**  
Description **LABORATORY GROWN DIAMOND**  
Shape and Cutting Style **CUT CORNERED  
RECTANGULAR MODIFIED  
BRILLIANT**  
Measurements **7.43 X 5.29 X 3.58 MM**

**GRADING RESULTS**

Carat Weight **1.30 CARAT**  
Color Grade **FANCY INTENSE YELLOW**  
Clarity Grade **VVS 2**



**ADDITIONAL GRADING INFORMATION**

Polish **EXCELLENT**  
Symmetry **EXCELLENT**  
Fluorescence **NONE**  
Inscription(s) **IGI LG650493037**

Comments: This Laboratory Grown Diamond was created by Chemical Vapor Deposition (CVD) growth process.



September 16, 2024  
IGI Report No LG650493037  
**CUT CORNERED RECT. MODIFIED BRILLIANT**  
7.43 X 5.29 X 3.58 MM  
1.30 CARAT  
FANCY INTENSE YELLOW  
VVS 2  
67.7%  
51%  
Medium to Slightly Thick  
Pointed  
EXCELLENT  
EXCELLENT  
NONE  
IGI LG650493037  
Comments: This Laboratory Grown Diamond was created by Chemical Vapor Deposition (CVD) growth process.

**LABORATORY GROWN DIAMOND REPORT**

September 16, 2024  
IGI Report Number **LG650493037**  
Description **LABORATORY GROWN DIAMOND**  
Shape and Cutting Style **CUT CORNERED RECTANGULAR  
MODIFIED BRILLIANT**  
Measurements **7.43 X 5.29 X 3.58 MM**

**GRADING RESULTS**

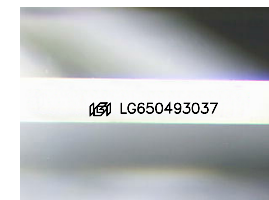
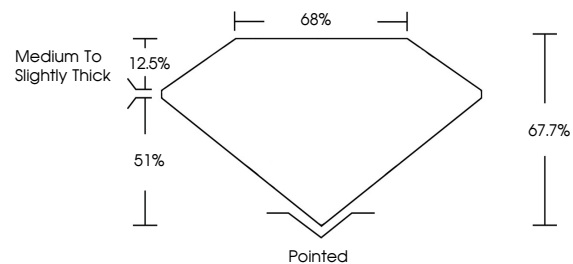
Carat Weight **1.30 CARAT**  
Color Grade **FANCY INTENSE YELLOW**  
Clarity Grade **VVS 2**

**ADDITIONAL GRADING INFORMATION**

Polish **EXCELLENT**  
Symmetry **EXCELLENT**  
Fluorescence **NONE**  
Inscription(s) **IGI LG650493037**

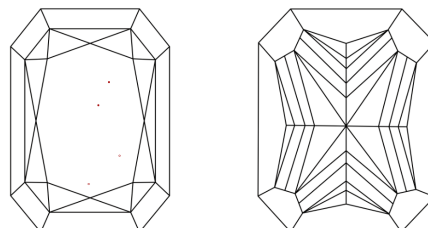
Comments: This Laboratory Grown Diamond was created by Chemical Vapor Deposition (CVD) growth process.

**PROPORTIONS**



Sample Image Used

**CLARITY CHARACTERISTICS**



**KEY TO SYMBOLS**

Red symbols indicate internal characteristics.  
Green symbols indicate external characteristics.

**COLOR**

D E F G H I J Faint Very Light Light

**CLARITY**

IF	VS <sup>1-2</sup>	VS <sup>1-2</sup>	SI <sup>1-2</sup>	I <sup>1-3</sup>
Internally Flawless	Very Very Slightly Included	Very Slightly Included	Slightly Included	Included