



ELECTRONIC COPY

LG650495113
Report verification at igi.org



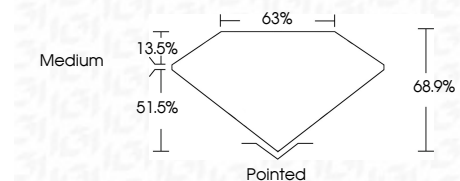
September 2, 2024
IGI Report Number LG650495113
Description LABORATORY GROWN DIAMOND

Shape and Cutting Style CUT CORNERED RECTANGULAR MODIFIED BRILLIANT

Measurements 10.11 X 7.08 X 4.88 MM

GRADING RESULTS

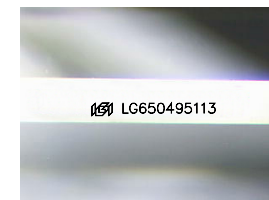
Carat Weight 3.04 CARATS
Color Grade E
Clarity Grade VS 2



ADDITIONAL GRADING INFORMATION

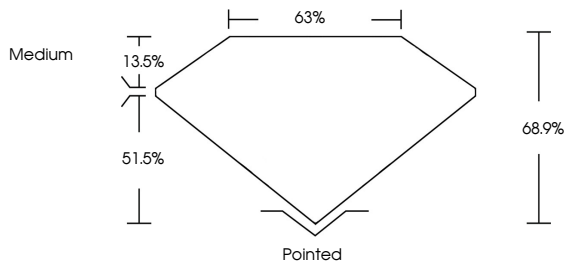
Polish EXCELLENT
Symmetry EXCELLENT
Fluorescence NONE
Inscription(s) IGI LG650495113

Comments: This Laboratory Grown Diamond was created by Chemical Vapor Deposition (CVD) growth process. Type IIa

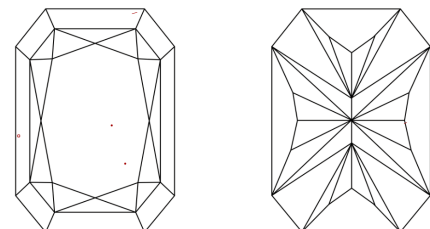


Sample Image Used

PROPORTIONS



CLARITY CHARACTERISTICS



KEY TO SYMBOLS

Red symbols indicate internal characteristics.
Green symbols indicate external characteristics.

COLOR

Table with color grades: D, E, F, G, H, I, J, Faint, Very Light, Light

CLARITY

Table with clarity grades: IF, VS 1-2, VS 1-2, SI 1-2, I 1-3, Internally Flawless, Very Very Slightly Included, Very Slightly Included, Slightly Included, Included



September 2, 2024
IGI Report No LG650495113
CUT CORNERED RECT. MODIFIED BRILLIANT
3.04 CARATS E
3.04 CARATS E
VS 2 68.9% 63%
Medium
Pointed
EXCELLENT EXCELLENT
NONE
IGI LG650495113
Comments: This Laboratory Grown Diamond was created by Chemical Vapor Deposition (CVD) growth process. Type IIa