



**INTERNATIONAL
GEMOLOGICAL
INSTITUTE**

ELECTRONIC COPY

LG650495494



September 2, 2024

IGI Report Number **LG650495494**

ROUND BRILLIANT

LABORATORY GROWN DIAMOND

4.77 - 4.79 X 2.91 MM

Carat Weight **0.40 CARAT**
 Color Grade **D**
 Clarity Grade **SI 1**
 Cut Grade **IDEAL**
 Polish **EXCELLENT**
 Symmetry **EXCELLENT**
 Fluorescence **NONE**
 Inscription(s) **IGI LG650495494**

Comments: HEARTS & ARROWS This Laboratory Grown Diamond was created by Chemical Vapor Deposition (CVD) growth process. Type Ila

LABORATORY GROWN DIAMOND REPORT

September 2, 2024

IGI Report Number

LG650495494

Description

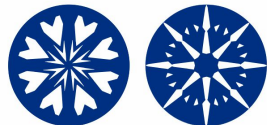
LABORATORY GROWN DIAMOND

Shape and Cutting Style

ROUND BRILLIANT

Measurements

4.77 - 4.79 X 2.91 MM



HEARTS & ARROWS

GRADING RESULTS

Carat Weight **0.40 CARAT**

Color Grade **D**

Clarity Grade **SI 1**

Cut Grade **IDEAL**

ADDITIONAL GRADING INFORMATION

Polish **EXCELLENT**

Symmetry **EXCELLENT**

Fluorescence **NONE**

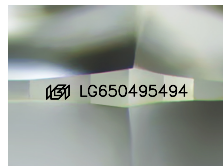
Inscription(s) **IGI LG650495494**

Comments: HEARTS & ARROWS

This Laboratory Grown Diamond was created by Chemical Vapor

Deposition (CVD) growth process.

Type Ila



Sample Image Used



September 2, 2024

IGI Report Number **LG650495494**

ROUND BRILLIANT

LABORATORY GROWN DIAMOND

4.77 - 4.79 X 2.91 MM

Carat Weight **0.40 CARAT**

Color Grade **D**

Clarity Grade **SI 1**

Cut Grade **IDEAL**

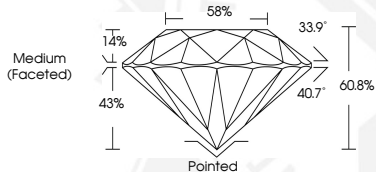
Polish **EXCELLENT**

Symmetry **EXCELLENT**

Fluorescence **NONE**

Inscription(s) **IGI LG650495494**

Comments: HEARTS & ARROWS This Laboratory Grown Diamond was created by Chemical Vapor Deposition (CVD) growth process. Type Ila



THIS DOCUMENT WAS PRODUCED WITH THE FOLLOWING SECURITY MEASURES: SPECIAL DOCUMENT PAPER, INK SCREENS, WATERMARK, BACKGROUND DESIGNS, HOLOGRAM AND OTHER SECURITY FEATURES NOT LISTED AND DO EXCEED DOCUMENT SECURITY INDUSTRY GUIDELINES.

For terms & conditions and to verify this report, please visit www.igi.org