



# INTERNATIONAL GEMOLOGICAL INSTITUTE

ELECTRONIC COPY

LG650495508



September 4, 2024

IGI Report Number LG650495508

ROUND BRILLIANT

LABORATORY GROWN DIAMOND

5.09 - 5.13 X 3.17 MM

Carat Weight 0.51 CARAT

Color Grade D

Clarity Grade VVS 1

Cut Grade IDEAL

Polish EXCELLENT

Symmetry EXCELLENT

Fluorescence NONE

Inscription(s) IGI LG650495508

Comments: HEARTS & ARROWS This Laboratory Grown Diamond was created by Chemical Vapor Deposition (CVD) growth process. Type Iia

## LABORATORY GROWN DIAMOND REPORT

September 4, 2024

IGI Report Number

LG650495508

Description

LABORATORY GROWN DIAMOND

Shape and Cutting Style

ROUND BRILLIANT

Measurements

5.09 - 5.13 X 3.17 MM

### GRADING RESULTS

Carat Weight

0.51 CARAT

Color Grade

D

Clarity Grade

VVS 1

Cut Grade

IDEAL

### ADDITIONAL GRADING INFORMATION

Polish

EXCELLENT

Symmetry

EXCELLENT

Fluorescence

NONE

Inscription(s)

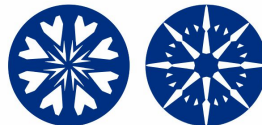
IGI LG650495508

Comments: HEARTS & ARROWS

This Laboratory Grown Diamond was created by Chemical Vapor

Deposition (CVD) growth process.

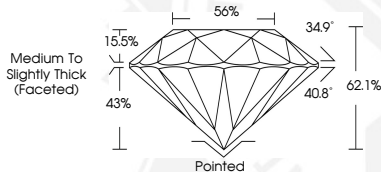
Type Iia



HEARTS & ARROWS



Sample Image Used



September 4, 2024

IGI Report Number LG650495508

ROUND BRILLIANT

LABORATORY GROWN DIAMOND

5.09 - 5.13 X 3.17 MM

Carat Weight 0.51 CARAT

Color Grade D

Clarity Grade VVS 1

Cut Grade IDEAL

Polish EXCELLENT

Symmetry EXCELLENT

Fluorescence NONE

Inscription(s) IGI LG650495508

Comments: HEARTS & ARROWS This Laboratory Grown Diamond was created by Chemical Vapor Deposition (CVD) growth process. Type Iia

THIS DOCUMENT WAS PRODUCED WITH THE FOLLOWING SECURITY MEASURES: SPECIAL DOCUMENT PAPER, INK SCREENS, WATERMARK, BACKGROUND DESIGN, HOLOGRAM AND OTHER SECURITY FEATURES NOT LISTED AND DO EXCEED DOCUMENT SECURITY INDUSTRY GUIDELINES.

For terms & conditions and to verify this report, please visit [www.igi.org](http://www.igi.org)