



ELECTRONIC COPY

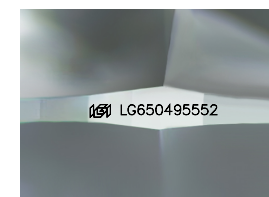
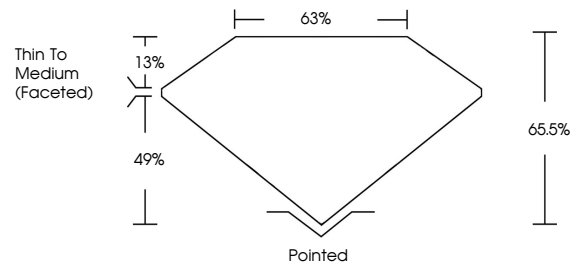
LG650495552
Report verification at igi.org



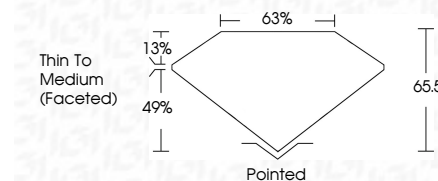
September 4, 2024
IGI Report Number **LG650495552**
Description **LABORATORY GROWN DIAMOND**
Shape and Cutting Style **CUSHION MODIFIED BRILLIANT**
Measurements **7.19 X 5.71 X 3.74 MM**
GRADING RESULTS
Carat Weight **1.16 CARAT**
Color Grade **E**
Clarity Grade **VS 1**

September 4, 2024
IGI Report Number **LG650495552**
Description **LABORATORY GROWN DIAMOND**
Shape and Cutting Style **CUSHION MODIFIED BRILLIANT**
Measurements **7.19 X 5.71 X 3.74 MM**
GRADING RESULTS
Carat Weight **1.16 CARAT**
Color Grade **E**
Clarity Grade **VS 1**

PROPORTIONS



Sample Image Used



ADDITIONAL GRADING INFORMATION

Polish **EXCELLENT**
Symmetry **VERY GOOD**
Fluorescence **NONE**
Inscription(s) **IGI LG650495552**

Comments: This Laboratory Grown Diamond was created by Chemical Vapor Deposition (CVD) growth process.
Type IIa

ADDITIONAL GRADING INFORMATION

Polish **EXCELLENT**
Symmetry **VERY GOOD**
Fluorescence **NONE**
Inscription(s) **IGI LG650495552**
Comments: This Laboratory Grown Diamond was created by Chemical Vapor Deposition (CVD) growth process.
Type IIa

COLOR

D E F G H I J Faint Very Light Light

CLARITY

IF	VS ¹⁻²	VS ¹⁻²	SI ¹⁻²	I ¹⁻³
Internally Flawless	Very Very Slightly Included	Very Slightly Included	Slightly Included	Included



IGI



September 4, 2024
IGI Report No **LG650495552**
CUSHION MODIFIED BRILLIANT
7.19 X 5.71 X 3.74 MM
1.16 CARAT
E
VS 1
65.5%
63%
Thin To Medium (Faceted)
Pointed
EXCELLENT
VERY GOOD
NONE
IGI LG650495552
Comments: This Laboratory Grown Diamond was created by Chemical Vapor Deposition (CVD) growth process.
Type IIa