



ELECTRONIC COPY

LG650498203 Report verification at igi.org



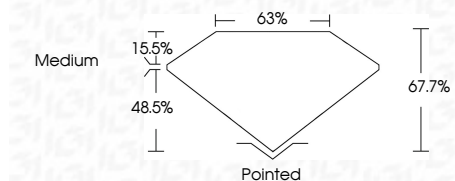
September 3, 2024 IGI Report Number LG650498203 Description LABORATORY GROWN DIAMOND

Shape and Cutting Style CUT CORNERED RECTANGULAR MODIFIED BRILLIANT

Measurements 8.09 X 5.70 X 3.86 MM

GRADING RESULTS

Carat Weight 1.55 CARAT Color Grade D Clarity Grade VVS 1



ADDITIONAL GRADING INFORMATION

Polish EXCELLENT Symmetry EXCELLENT Fluorescence NONE Inscription(s) IGI LG650498203

Comments: This Laboratory Grown Diamond was created by Chemical Vapor Deposition (CVD) growth process. Type IIa



September 3, 2024 IGI Report No LG650498203 CUT CORNERED RECT. MODIFIED BRILLIANT 1.55 CARAT D 8.09 X 5.70 X 3.86 MM VVS 1 67.7% 63% Medium Pointed EXCELLENT EXCELLENT NONE NONE IGI LG650498203

Comments: This Laboratory Grown Diamond was created by Chemical Vapor Deposition (CVD) growth process. Type IIa

LABORATORY GROWN DIAMOND REPORT

September 3, 2024 IGI Report Number LG650498203 Description LABORATORY GROWN DIAMOND Shape and Cutting Style CUT CORNERED RECTANGULAR MODIFIED BRILLIANT Measurements 8.09 X 5.70 X 3.86 MM

GRADING RESULTS

Carat Weight 1.55 CARAT Color Grade D Clarity Grade VVS 1

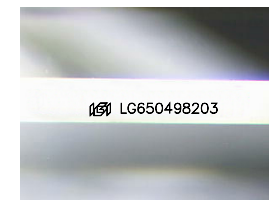
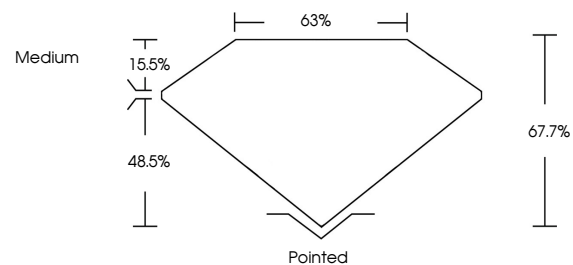
ADDITIONAL GRADING INFORMATION

Polish EXCELLENT Symmetry EXCELLENT Fluorescence NONE

Inscription(s) IGI LG650498203

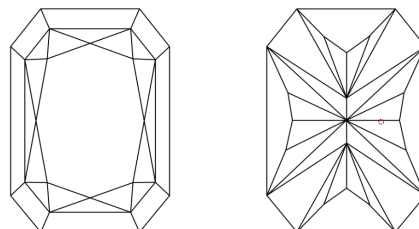
Comments: This Laboratory Grown Diamond was created by Chemical Vapor Deposition (CVD) growth process. Type IIa

PROPORTIONS



Sample Image Used

CLARITY CHARACTERISTICS



KEY TO SYMBOLS

Red symbols indicate internal characteristics. Green symbols indicate external characteristics.

COLOR

D E F G H I J Faint Very Light Light

CLARITY

IF VVS 1-2 VS 1-2 SI 1-2 I 1-3 Internally Flawless Very Very Slightly Included Very Slightly Included Slightly Included Included

