



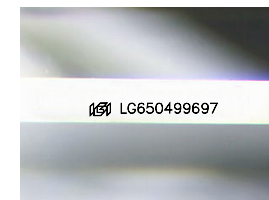
ELECTRONIC COPY

LG650499697
Report verification at igi.org



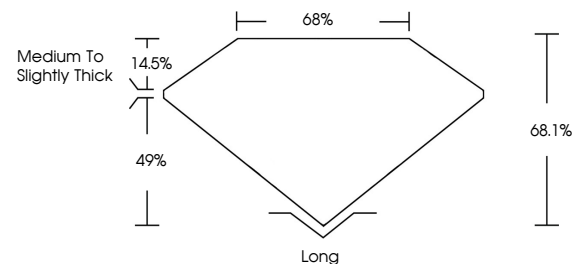
September 4, 2024
IGI Report Number **LG650499697**
Description **LABORATORY GROWN DIAMOND**
Shape and Cutting Style **EMERALD CUT**
Measurements **12.12 X 7.74 X 5.27 MM**

GRADING RESULTS
Carat Weight **5.01 CARATS**
Color Grade **G**
Clarity Grade **VS 1**

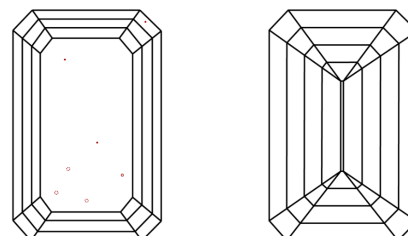


Sample Image Used

PROPORTIONS



CLARITY CHARACTERISTICS



KEY TO SYMBOLS

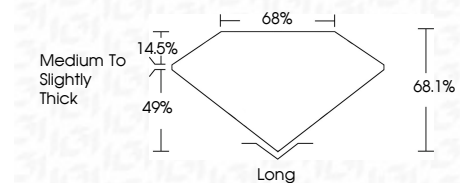
Red symbols indicate internal characteristics.
Green symbols indicate external characteristics.

COLOR

D E F G H I J Faint Very Light Light

CLARITY

IF	WS ¹⁻²	VS ¹⁻²	SI ¹⁻²	I ¹⁻³
Internally Flawless	Very Very Slightly Included	Very Slightly Included	Slightly Included	Included



ADDITIONAL GRADING INFORMATION

Polish **EXCELLENT**
Symmetry **EXCELLENT**
Fluorescence **NONE**
Inscription(s) **IGI LG650499697**
Comments: This Laboratory Grown Diamond was created by Chemical Vapor Deposition (CVD) growth process. Type IIa



IGI

September 4, 2024
IGI Report No. LG650499697
EMERALD CUT

5.01 CARATS
G

12.12 X 7.74 X 5.27 MM
5.01 CARATS
G
VS 1
68.1%
49%
Medium to Slightly Thick

Long
EXCELLENT
EXCELLENT
NONE
IGI LG650499697

Comments: This Laboratory Grown Diamond was created by Chemical Vapor Deposition (CVD) growth process. Type IIa

