



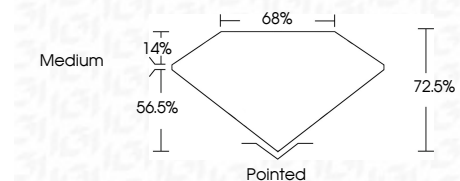
ELECTRONIC COPY

LG651407115 Report verification at igi.org



September 10, 2024 IGI Report Number LG651407115 Description LABORATORY GROWN DIAMOND Shape and Cutting Style PRINCESS CUT Measurements 6.61 X 6.52 X 4.73 MM

GRADING RESULTS Carat Weight 1.83 CARAT Color Grade E Clarity Grade VS 1



ADDITIONAL GRADING INFORMATION Polish EXCELLENT Symmetry EXCELLENT Fluorescence NONE Inscription(s) LG651407115 Comments: As Grown - No indication of post-growth treatment. This Laboratory Grown Diamond was created by High Pressure High Temperature (HPHT) growth process. Type II



September 10, 2024 IGI Report No LG651407115 PRINCESS CUT 1.83 CARAT E VS 1 72.5% 65% Medium Pointed EXCELLENT EXCELLENT NONE NONE LG651407115 Comments: As Grown - No indication of post-growth treatment. This Laboratory Grown Diamond was created by High Pressure High Temperature (HPHT) growth process. Type II

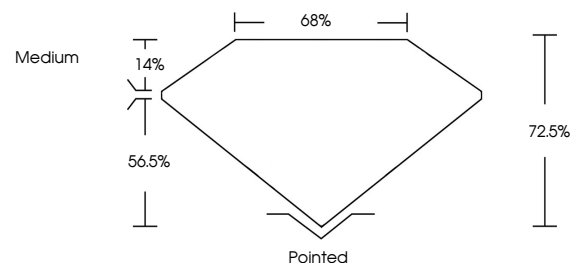
September 10, 2024 IGI Report Number LG651407115 Description LABORATORY GROWN DIAMOND Shape and Cutting Style PRINCESS CUT Measurements 6.61 X 6.52 X 4.73 MM

GRADING RESULTS Carat Weight 1.83 CARAT Color Grade E Clarity Grade VS 1

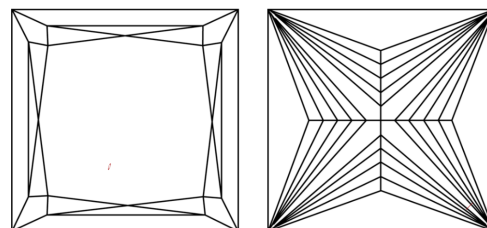
ADDITIONAL GRADING INFORMATION Polish EXCELLENT Symmetry EXCELLENT Fluorescence NONE Inscription(s) LG651407115

Comments: As Grown - No indication of post-growth treatment. This Laboratory Grown Diamond was created by High Pressure High Temperature (HPHT) growth process. Type II

PROPORTIONS



CLARITY CHARACTERISTICS



KEY TO SYMBOLS

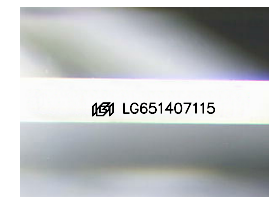
Red symbols indicate internal characteristics. Green symbols indicate external characteristics.

COLOR

D E F G H I J Faint Very Light Light

CLARITY

IF VS 1-2 VS 1-2 SI 1-2 I 1-3 Internally Flawless Very Very Slightly Included Very Slightly Included Slightly Included Included



Sample Image Used

