



ELECTRONIC COPY

LG651408993
Report verification at igi.org



September 10, 2024

IGI Report Number **LG651408993**

Description **LABORATORY GROWN DIAMOND**

Shape and Cutting Style **PRINCESS CUT**

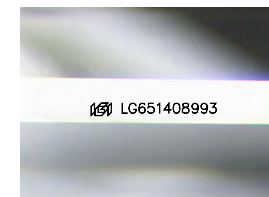
Measurements **6.38 X 6.22 X 4.25 MM**

GRADING RESULTS

Carat Weight **1.49 CARAT**

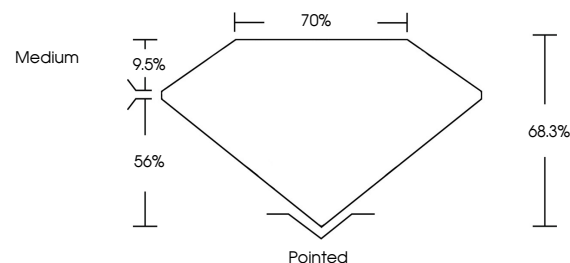
Color Grade **D**

Clarity Grade **VVS 2**

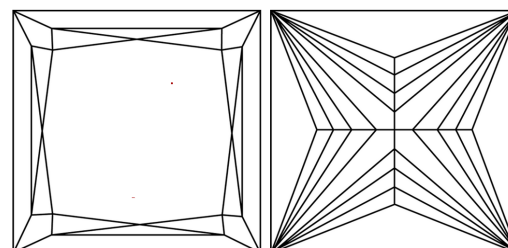


Sample Image Used

PROPORTIONS



CLARITY CHARACTERISTICS



KEY TO SYMBOLS

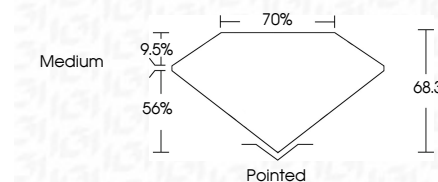
Red symbols indicate internal characteristics.
Green symbols indicate external characteristics.

COLOR

D E F G H I J Faint Very Light Light

CLARITY

IF	VS ¹⁻²	VS ¹⁻²	SI ¹⁻²	I ¹⁻³
Internally Flawless	Very Very Slightly Included	Very Slightly Included	Slightly Included	Included



ADDITIONAL GRADING INFORMATION

Polish **EXCELLENT**

Symmetry **EXCELLENT**

Fluorescence **NONE**

Inscription(s) **IGI LG651408993**

Comments: This Laboratory Grown Diamond was created by Chemical Vapor Deposition (CVD) growth process.
Type IIa



IGI



September 10, 2024
IGI Report No LG651408993
PRINCESS CUT

6.38 X 6.22 X 4.25 MM

1.49 CARAT

D

VVS 2

68.3%

70%

Medium

Pointed

EXCELLENT

EXCELLENT

NONE

IGI LG651408993

Comments: This Laboratory Grown Diamond was created by Chemical Vapor Deposition (CVD) growth process.
Type IIa