



**ELECTRONIC COPY**

LG651413254  
Report verification at igi.org



September 11, 2024

IGI Report Number **LG651413254**

Description **LABORATORY GROWN DIAMOND**

Shape and Cutting Style **CUSHION BRILLIANT**

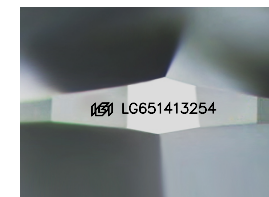
Measurements **9.71 X 7.75 X 5.33 MM**

**GRADING RESULTS**

Carat Weight **3.01 CARATS**

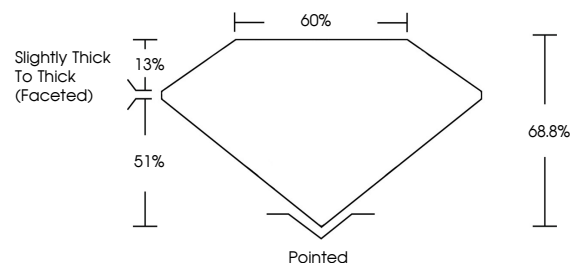
Color Grade **G**

Clarity Grade **VS 2**

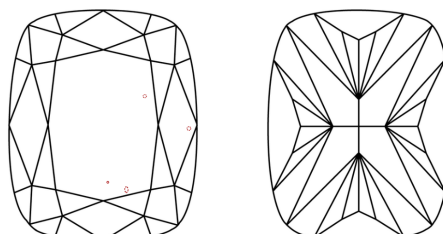


Sample Image Used

**PROPORTIONS**



**CLARITY CHARACTERISTICS**



**KEY TO SYMBOLS**

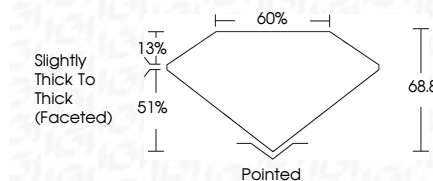
Red symbols indicate internal characteristics.  
Green symbols indicate external characteristics.

**COLOR**

D E F G H I J Faint Very Light Light

**CLARITY**

IF	VS <sup>1-2</sup>	VS <sup>1-2</sup>	SI <sup>1-2</sup>	I <sup>1-3</sup>
Internally Flawless	Very Very Slightly Included	Very Slightly Included	Slightly Included	Included



**ADDITIONAL GRADING INFORMATION**

Polish **EXCELLENT**

Symmetry **EXCELLENT**

Fluorescence **NONE**

Inscription(s) **IGI LG651413254**

Comments: This Laboratory Grown Diamond was created by Chemical Vapor Deposition (CVD) growth process. Type IIa



**IGI**



September 11, 2024  
IGI Report No LG651413254  
**CUSHION BRILLIANT**

**3.01 CARATS**  
G

Carat Weight **3.01**  
Color Grade **G**  
Clarity Grade **VS 2**  
Table **60%**  
Depth **51%**  
Girdle **Slightly Thick To Thick (Faceted)**

Culet **Pointed**  
Polish **EXCELLENT**  
Symmetry **EXCELLENT**  
Fluorescence **NONE**  
Inscription(s) **IGI LG651413254**

Comments: This Laboratory Grown Diamond was created by Chemical Vapor Deposition (CVD) growth process. Type IIa