



ELECTRONIC COPY

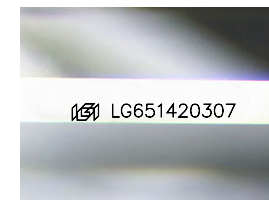
LG651420307
Report verification at igi.org



October 17, 2024
IGI Report Number **LG651420307**
Description **LABORATORY GROWN DIAMOND**
Shape and Cutting Style **EMERALD CUT**
Measurements **9.28 X 6.48 X 4.34 MM**

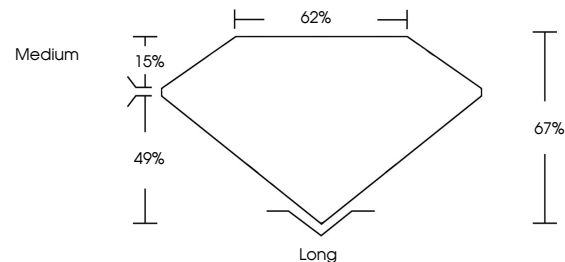
GRADING RESULTS

Carat Weight **2.58 CARATS**
Color Grade **E**
Clarity Grade **VVS 1**

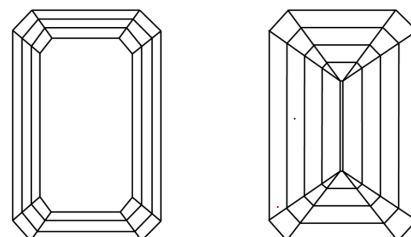


Sample Image Used

PROPORTIONS



CLARITY CHARACTERISTICS



KEY TO SYMBOLS

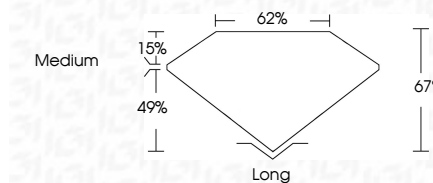
Red symbols indicate internal characteristics.
Green symbols indicate external characteristics.

COLOR

D E F G H I J Faint Very Light Light

CLARITY

IF	VS ¹⁻²	VS ¹⁻²	SI ¹⁻²	I ¹⁻³
Internally Flawless	Very Very Slightly Included	Very Slightly Included	Slightly Included	Included



ADDITIONAL GRADING INFORMATION

Polish **EXCELLENT**
Symmetry **EXCELLENT**
Fluorescence **NONE**
Inscription(s) **IGI LG651420307**
Comments: This Laboratory Grown Diamond was created by Chemical Vapor Deposition (CVD) growth process.
Type IIa



IGI



October 17, 2024
IGI Report No LG651420307
EMERALD CUT
9.28 X 6.48 X 4.34 MM
2.58 CARATS
Color Grade **E**
Clarity Grade **VVS 1**
Depth **67%**
Table **62%**
Girdle **Medium**
Culet **Long**
Polish **EXCELLENT**
Symmetry **EXCELLENT**
Fluorescence **NONE**
Inscription(s) **IGI LG651420307**

Comments: This Laboratory Grown Diamond was created by Chemical Vapor Deposition (CVD) growth process.
Type IIa