



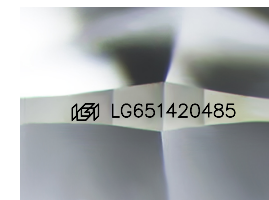
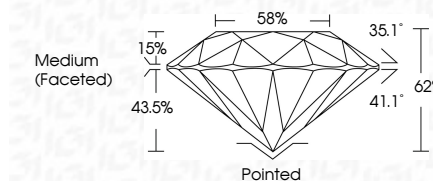
ELECTRONIC COPY

LG651420485
Report verification at igi.org



November 20, 2024
IGI Report Number LG651420485
Description LABORATORY GROWN DIAMOND
Shape and Cutting Style ROUND BRILLIANT
Measurements 8.10 - 8.13 X 5.03 MM

GRADING RESULTS
Carat Weight 2.04 CARATS
Color Grade E
Clarity Grade VVS 1
Cut Grade IDEAL



Sample Image Used

ADDITIONAL GRADING INFORMATION
Polish EXCELLENT
Symmetry EXCELLENT
Fluorescence NONE
Inscription(s) IGI LG651420485
Comments: HEARTS & ARROWS
This Laboratory Grown Diamond was created by Chemical Vapor Deposition (CVD) growth process. Type IIa



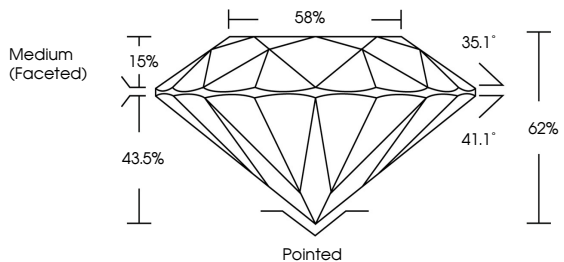
November 20, 2024
IGI Report No LG651420485
ROUND BRILLIANT
8.10 - 8.13 X 5.03 MM
2.04 CARATS E
Carat Weight
Color Grade VVS 1 IDEAL
Clarity Grade VVS 1 IDEAL
Depth 62%
Table 58%
Girdle
Medium (Faceted)
Culet Pointed
Polish EXCELLENT
Symmetry EXCELLENT
Fluorescence NONE
Inscriptions(s) IGI LG651420485
Comments: HEARTS & ARROWS
This Laboratory Grown Diamond was created by Chemical Vapor Deposition (CVD) growth process. Type IIa

November 20, 2024
IGI Report Number LG651420485
Description LABORATORY GROWN DIAMOND
Shape and Cutting Style ROUND BRILLIANT
Measurements 8.10 - 8.13 X 5.03 MM
GRADING RESULTS
Carat Weight 2.04 CARATS
Color Grade E
Clarity Grade VVS 1
Cut Grade IDEAL

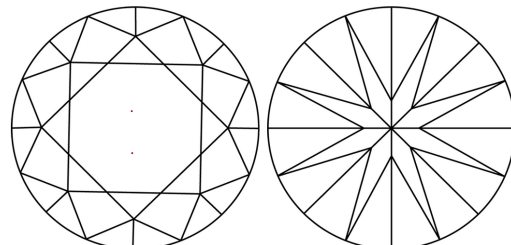
ADDITIONAL GRADING INFORMATION
Polish EXCELLENT
Symmetry EXCELLENT
Fluorescence NONE
Inscription(s) IGI LG651420485

Comments: HEARTS & ARROWS
This Laboratory Grown Diamond was created by Chemical Vapor Deposition (CVD) growth process. Type IIa

PROPORTIONS



CLARITY CHARACTERISTICS



KEY TO SYMBOLS
Red symbols indicate internal characteristics.
Green symbols indicate external characteristics.



COLOR

Table with color grades: D, E, F, G, H, I, J, Faint, Very Light, Light

CLARITY

Table with clarity grades: IF, VVS 1-2, VS 1-2, SI 1-2, I 1-3, Internally Flawless, Very Very Slightly Included, Very Slightly Included, Slightly Included, Included

