



**ELECTRONIC COPY**

LG651424333  
Report verification at igi.org



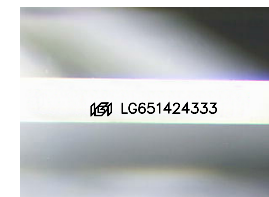
September 4, 2024  
IGI Report Number **LG651424333**  
Description **LABORATORY GROWN DIAMOND**

Shape and Cutting Style **CUT CORNERED  
RECTANGULAR MODIFIED  
BRILLIANT**

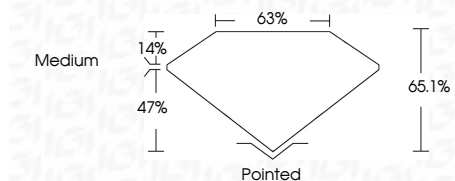
Measurements **8.98 X 6.19 X 4.03 MM**

**GRADING RESULTS**

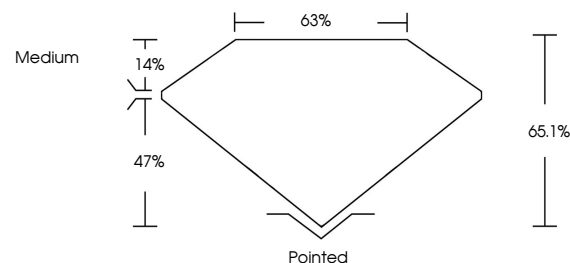
Carat Weight **1.95 CARAT**  
Color Grade **E**  
Clarity Grade **VS 2**



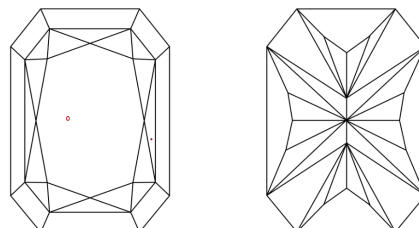
Sample Image Used



**PROPORTIONS**



**CLARITY CHARACTERISTICS**



**KEY TO SYMBOLS**

Red symbols indicate internal characteristics.  
Green symbols indicate external characteristics.

**COLOR**

D E F G H I J Faint Very Light Light

**CLARITY**

IF	VS <sup>1-2</sup>	VS <sup>1-2</sup>	SI <sup>1-2</sup>	I <sup>1-3</sup>
Internally Flawless	Very Very Slightly Included	Very Slightly Included	Slightly Included	Included

**ADDITIONAL GRADING INFORMATION**

Polish **EXCELLENT**  
Symmetry **EXCELLENT**  
Fluorescence **NONE**  
Inscription(s) **(IGI) LG651424333**  
Comments: This Laboratory Grown Diamond was created by Chemical Vapor Deposition (CVD) growth process. Type IIa



**IGI**



September 4, 2024  
IGI Report No LG651424333  
CUT CORNERED RECT. MODIFIED BRILLIANT  
8.98 X 6.19 X 4.03 MM  
1.95 CARAT  
E  
VS 2  
65.1%  
63%  
Medium  
Pointed  
EXCELLENT  
EXCELLENT  
NONE  
(IGI) LG651424333  
Comments: This Laboratory Grown Diamond was created by Chemical Vapor Deposition (CVD) growth process. Type IIa