



**ELECTRONIC COPY**

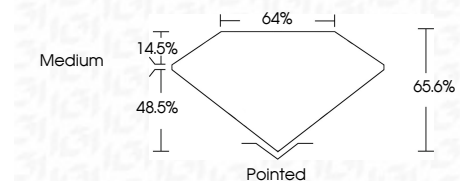
LG651432379  
Report verification at igi.org



September 7, 2024  
IGI Report Number **LG651432379**  
Description **LABORATORY GROWN DIAMOND**  
Shape and Cutting Style **SQUARE EMERALD CUT**  
Measurements **8.74 X 8.72 X 5.72 MM**

**GRADING RESULTS**

Carat Weight **3.96 CARATS**  
Color Grade **E**  
Clarity Grade **VS 1**



**ADDITIONAL GRADING INFORMATION**

Polish **EXCELLENT**  
Symmetry **EXCELLENT**  
Fluorescence **NONE**  
Inscription(s) **IGI LG651432379**  
Comments: This Laboratory Grown Diamond was created by Chemical Vapor Deposition (CVD) growth process.  
Type IIa



**IGI**

September 7, 2024  
IGI Report No LG651432379  
**SQUARE EMERALD CUT**  
8.74 X 8.72 X 5.72 MM  
3.96 CARATS  
E  
VS 1  
65.6%  
48.5%  
14.5%  
Medium  
Pointed  
EXCELLENT  
EXCELLENT  
NONE  
IGI LG651432379  
Comments: This Laboratory Grown Diamond was created by Chemical Vapor Deposition (CVD) growth process.  
Type IIa

**LABORATORY GROWN DIAMOND REPORT**

September 7, 2024  
IGI Report Number **LG651432379**  
Description **LABORATORY GROWN DIAMOND**  
Shape and Cutting Style **SQUARE EMERALD CUT**  
Measurements **8.74 X 8.72 X 5.72 MM**

**GRADING RESULTS**

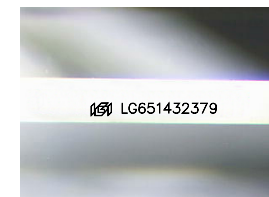
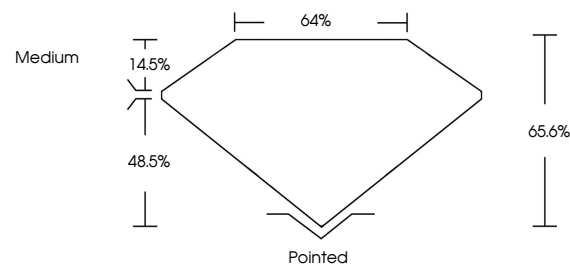
Carat Weight **3.96 CARATS**  
Color Grade **E**  
Clarity Grade **VS 1**

**ADDITIONAL GRADING INFORMATION**

Polish **EXCELLENT**  
Symmetry **EXCELLENT**  
Fluorescence **NONE**  
Inscription(s) **IGI LG651432379**

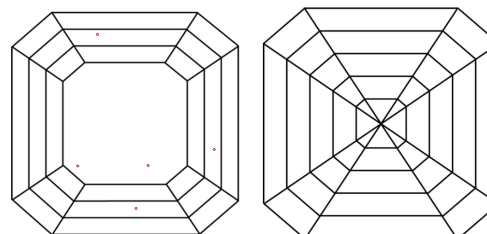
Comments: This Laboratory Grown Diamond was created by Chemical Vapor Deposition (CVD) growth process.  
Type IIa

**PROPORTIONS**



Sample Image Used

**CLARITY CHARACTERISTICS**



**KEY TO SYMBOLS**

Red symbols indicate internal characteristics.  
Green symbols indicate external characteristics.

**COLOR**

D E F G H I J Faint Very Light Light

**CLARITY**

IF	VS <sup>1-2</sup>	VS <sup>1-2</sup>	SI <sup>1-2</sup>	I <sup>1-3</sup>
Internally Flawless	Very Very Slightly Included	Very Slightly Included	Slightly Included	Included

