



ELECTRONIC COPY

LABORATORY GROWN DIAMOND REPORT

September 9, 2024
IGI Report Number LG651436700
Description LABORATORY GROWN DIAMOND
Shape and Cutting Style CUT CORNERED RECTANGULAR MODIFIED BRILLIANT
Measurements 8.87 X 6.38 X 4.47 MM

GRADING RESULTS

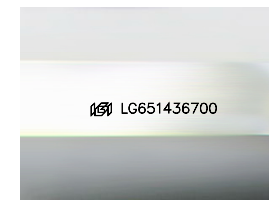
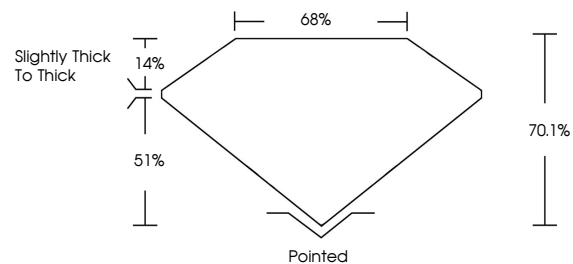
Carat Weight 2.30 CARATS
Color Grade F
Clarity Grade VVS 2

ADDITIONAL GRADING INFORMATION

Polish EXCELLENT
Symmetry EXCELLENT
Fluorescence NONE
Inscription(s) LG651436700

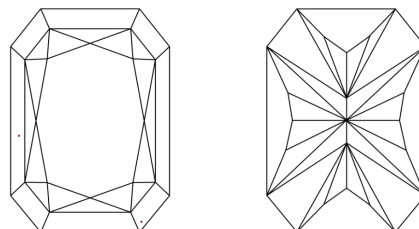
Comments: This Laboratory Grown Diamond was created by Chemical Vapor Deposition (CVD) growth process.
Type IIa

PROPORTIONS



Sample Image Used

CLARITY CHARACTERISTICS



KEY TO SYMBOLS

Red symbols indicate internal characteristics.
Green symbols indicate external characteristics.

COLOR

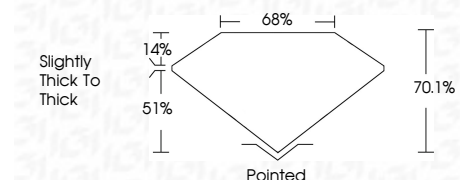
D E F G H I J Faint Very Light Light

CLARITY

IF	VS ¹⁻²	VS ¹⁻²	SI ¹⁻²	I ¹⁻³
Internally Flawless	Very Very Slightly Included	Very Slightly Included	Slightly Included	Included



September 9, 2024
IGI Report Number LG651436700
Description LABORATORY GROWN DIAMOND
Shape and Cutting Style CUT CORNERED RECTANGULAR MODIFIED BRILLIANT
Measurements 8.87 X 6.38 X 4.47 MM
GRADING RESULTS
Carat Weight 2.30 CARATS
Color Grade F
Clarity Grade VVS 2



ADDITIONAL GRADING INFORMATION

Polish EXCELLENT
Symmetry EXCELLENT
Fluorescence NONE
Inscription(s) LG651436700
Comments: This Laboratory Grown Diamond was created by Chemical Vapor Deposition (CVD) growth process.
Type IIa



IGI



September 9, 2024
IGI Report No LG651436700
CUT CORNERED RECT. MODIFIED BRILLIANT
8.87 X 6.38 X 4.47 MM
2.30 CARATS
F
VVS 2
70.1%
68%
Slightly Thick To Thick
Pointed
EXCELLENT
EXCELLENT
NONE
None
 LG651436700
Comments: This Laboratory Grown Diamond was created by Chemical Vapor Deposition (CVD) growth process.
Type IIa