



**INTERNATIONAL
GEMOLOGICAL
INSTITUTE**

ELECTRONIC COPY

LG651438402



September 6, 2024
IGI Report Number LG651438402
ROUND BRILLIANT
LABORATORY GROWN DIAMOND
4.52 - 4.55 X 2.73 MM
 Carat Weight **0.34 CARAT**
 Color Grade **D**
 Clarity Grade **VVS 2**
 Cut Grade **IDEAL**
 Polish **EXCELLENT**
 Symmetry **EXCELLENT**
 Fluorescence **NONE**
 Inscription(s) **IGI LG651438402**
 Comments: HEARTS & ARROWS This Laboratory Grown Diamond was created by Chemical Vapor Deposition (CVD) growth process. Type I_{IIa}

LABORATORY GROWN DIAMOND REPORT

September 6, 2024
 IGI Report Number **LG651438402**
 Description **LABORATORY GROWN DIAMOND**
 Shape and Cutting Style **ROUND BRILLIANT**
 Measurements **4.52 - 4.55 X 2.73 MM**

GRADING RESULTS

Carat Weight **0.34 CARAT**
 Color Grade **D**
 Clarity Grade **VVS 2**
 Cut Grade **IDEAL**

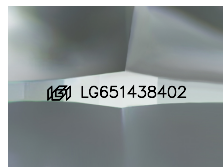
ADDITIONAL GRADING INFORMATION

Polish **EXCELLENT**
 Symmetry **EXCELLENT**
 Fluorescence **NONE**
 Inscription(s) **IGI LG651438402**

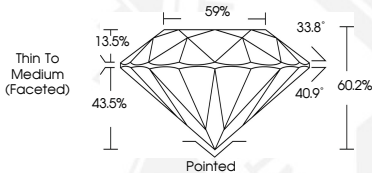
Comments: HEARTS & ARROWS
 This Laboratory Grown Diamond was created by Chemical Vapor Deposition (CVD) growth process. Type I_{IIa}



HEARTS & ARROWS



Sample Image Used



September 6, 2024
IGI Report Number LG651438402
ROUND BRILLIANT
LABORATORY GROWN DIAMOND
4.52 - 4.55 X 2.73 MM
 Carat Weight **0.34 CARAT**
 Color Grade **D**
 Clarity Grade **VVS 2**
 Cut Grade **IDEAL**
 Polish **EXCELLENT**
 Symmetry **EXCELLENT**
 Fluorescence **NONE**
 Inscription(s) **IGI LG651438402**
 Comments: HEARTS & ARROWS This Laboratory Grown Diamond was created by Chemical Vapor Deposition (CVD) growth process. Type I_{IIa}

THIS DOCUMENT WAS PRODUCED WITH THE FOLLOWING SECURITY MEASURES: SPECIAL DOCUMENT PAPER, INK SCREENS, WATERMARK, BACKGROUND DESIGNS, HOLOGRAM AND OTHER SECURITY FEATURES NOT LISTED AND DO EXCEED DOCUMENT SECURITY INDUSTRY GUIDELINES.

For terms & conditions and to verify this report, please visit www.igi.org