



**INTERNATIONAL  
GEMOLOGICAL  
INSTITUTE**

**ELECTRONIC COPY**

**LG651438414**



**September 5, 2024**

**IGI Report Number LG651438414**  
**ROUND BRILLIANT**  
**LABORATORY GROWN DIAMOND**  
**5.81 - 5.86 X 3.54 MM**

**Carat Weight 0.73 CARAT**  
**Color Grade D**  
**Clarity Grade VVS 2**  
**Cut Grade IDEAL**  
**Polish EXCELLENT**  
**Symmetry EXCELLENT**  
**Fluorescence NONE**  
**Inscription(s) IGI LG651438414**

**Comments: HEARTS & ARROWS** This Laboratory Grown Diamond was created by Chemical Vapor Deposition (CVD) growth process. Type Iia

**LABORATORY GROWN DIAMOND REPORT**

September 5, 2024  
IGI Report Number **LG651438414**  
Description **LABORATORY GROWN DIAMOND**  
Shape and Cutting Style **ROUND BRILLIANT**  
Measurements **5.81 - 5.86 X 3.54 MM**

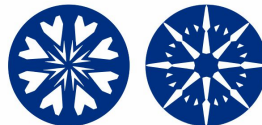
**GRADING RESULTS**

**Carat Weight 0.73 CARAT**  
**Color Grade D**  
**Clarity Grade VVS 2**  
**Cut Grade IDEAL**

**ADDITIONAL GRADING INFORMATION**

**Polish EXCELLENT**  
**Symmetry EXCELLENT**  
**Fluorescence NONE**  
**Inscription(s) IGI LG651438414**

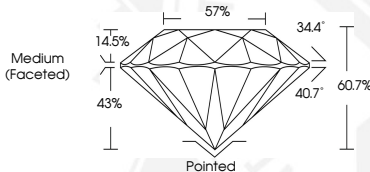
**Comments: HEARTS & ARROWS**  
This Laboratory Grown Diamond was created by Chemical Vapor Deposition (CVD) growth process. Type Iia



**HEARTS & ARROWS**



Sample Image Used



**September 5, 2024**

**IGI Report Number LG651438414**  
**ROUND BRILLIANT**  
**LABORATORY GROWN DIAMOND**  
**5.81 - 5.86 X 3.54 MM**

**Carat Weight 0.73 CARAT**  
**Color Grade D**  
**Clarity Grade VVS 2**  
**Cut Grade IDEAL**  
**Polish EXCELLENT**  
**Symmetry EXCELLENT**  
**Fluorescence NONE**  
**Inscription(s) IGI LG651438414**

**Comments: HEARTS & ARROWS** This Laboratory Grown Diamond was created by Chemical Vapor Deposition (CVD) growth process. Type Iia

THIS DOCUMENT WAS PRODUCED WITH THE FOLLOWING SECURITY MEASURES: SPECIAL DOCUMENT PAPER, INK SCREENS, WATERMARK, BACKGROUND DESIGNS, HOLOGRAM AND OTHER SECURITY FEATURES NOT LISTED AND DO EXCEED DOCUMENT SECURITY INDUSTRY GUIDELINES.

For terms & conditions and to verify this report, please visit [www.igi.org](http://www.igi.org)