



ELECTRONIC COPY

LG651439397
Report verification at igi.org



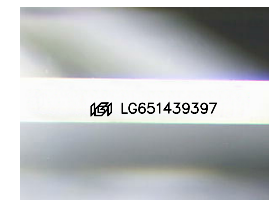
September 5, 2024
IGI Report Number **LG651439397**
Description **LABORATORY GROWN DIAMOND**

Shape and Cutting Style **CUT CORNERED
RECTANGULAR MODIFIED
BRILLIANT**

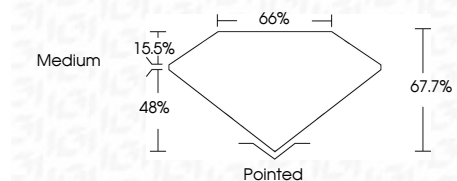
Measurements **8.56 X 5.86 X 3.97 MM**

GRADING RESULTS

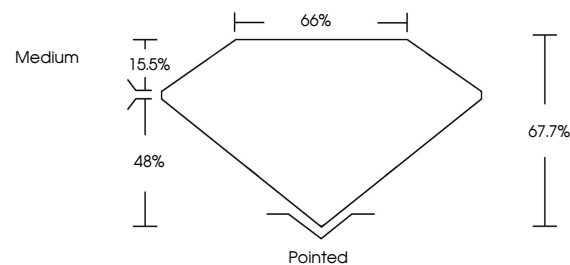
Carat Weight **1.76 CARAT**
Color Grade **F**
Clarity Grade **VVS 1**



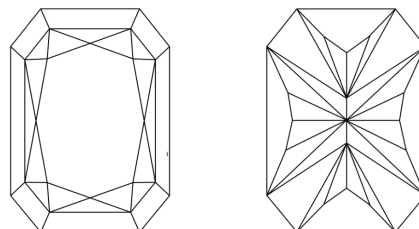
Sample Image Used



PROPORTIONS



CLARITY CHARACTERISTICS



KEY TO SYMBOLS

Red symbols indicate internal characteristics.
Green symbols indicate external characteristics.

COLOR

D E F G H I J Faint Very Light Light

CLARITY

IF	VS ¹⁻²	VS ¹⁻²	SI ¹⁻²	I ¹⁻³
Internally Flawless	Very Very Slightly Included	Very Slightly Included	Slightly Included	Included

ADDITIONAL GRADING INFORMATION

Polish **EXCELLENT**
Symmetry **EXCELLENT**
Fluorescence **NONE**
Inscription(s) **IGI LG651439397**
Comments: This Laboratory Grown Diamond was created by Chemical Vapor Deposition (CVD) growth process. Type IIa



IGI



September 5, 2024
IGI Report No LG651439397
CUT CORNERED RECT. MODIFIED BRILLIANT
8.56 X 5.86 X 3.97 MM
1.76 CARAT
F
VVS 1
67.7%
66%
Medium
Pointed
EXCELLENT
EXCELLENT
NONE
IGI LG651439397
Comments: This Laboratory Grown Diamond was created by Chemical Vapor Deposition (CVD) growth process. Type IIa