



ELECTRONIC COPY

LG651439420 Report verification at igi.org

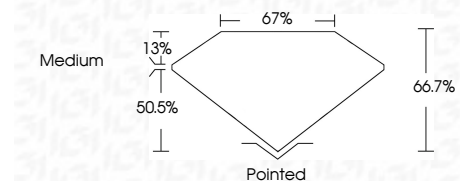


September 7, 2024 IGI Report Number LG651439420 Description LABORATORY GROWN DIAMOND Shape and Cutting Style CUT CORNERED RECTANGULAR MODIFIED BRILLIANT

Measurements 10.13 X 6.96 X 4.64 MM

GRADING RESULTS

Carat Weight 2.90 CARATS Color Grade E Clarity Grade VS 1

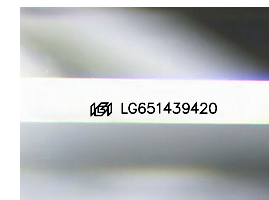


ADDITIONAL GRADING INFORMATION

Polish EXCELLENT Symmetry EXCELLENT Fluorescence NONE Inscription(s) IGI LG651439420 Comments: This Laboratory Grown Diamond was created by Chemical Vapor Deposition (CVD) growth process. Type IIa

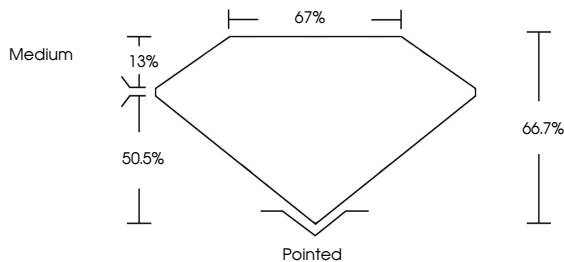


September 7, 2024 IGI Report No LG651439420 CUT CORNERED RECT. MODIFIED BRILLIANT 10.13 X 6.96 X 4.64 MM 2.90 CARATS E VS 1 66.7% 67% Medium Pointed EXCELLENT EXCELLENT NONE IGI LG651439420 Comments: This Laboratory Grown Diamond was created by Chemical Vapor Deposition (CVD) growth process. Type IIa

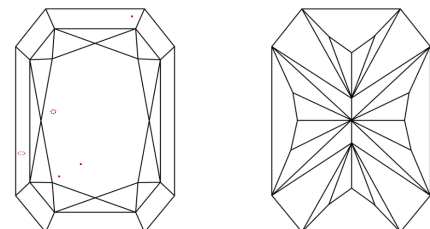


Sample Image Used

PROPORTIONS



CLARITY CHARACTERISTICS



KEY TO SYMBOLS Red symbols indicate internal characteristics. Green symbols indicate external characteristics.

COLOR

Table with color grades: D, E, F, G, H, I, J, Faint, Very Light, Light

CLARITY

Table with clarity grades: IF, VS 1-2, VS 1-2, SI 1-2, I 1-3, Internally Flawless, Very Very Slightly Included, Very Slightly Included, Slightly Included, Included

