



ELECTRONIC COPY

LABORATORY GROWN DIAMOND REPORT

September 14, 2024
IGI Report Number LG651439923
Description LABORATORY GROWN DIAMOND
Shape and Cutting Style CUT CORNERED RECTANGULAR MODIFIED BRILLIANT
Measurements 8.91 X 6.33 X 4.36 MM

GRADING RESULTS

Carat Weight 2.10 CARATS
Color Grade E
Clarity Grade VVS 2

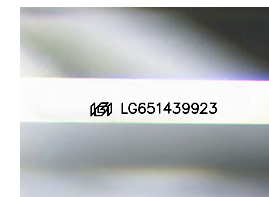
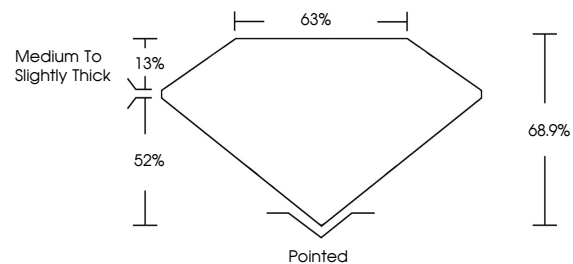
ADDITIONAL GRADING INFORMATION

Polish EXCELLENT
Symmetry EXCELLENT
Fluorescence NONE

Inscription(s) LG651439923

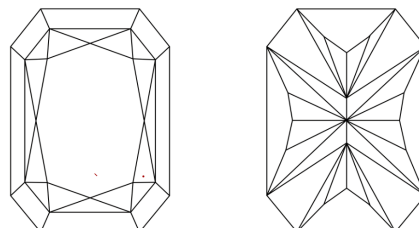
Comments: This Laboratory Grown Diamond was created by Chemical Vapor Deposition (CVD) growth process.
Type IIa

PROPORTIONS



Sample Image Used

CLARITY CHARACTERISTICS



KEY TO SYMBOLS

Red symbols indicate internal characteristics.
Green symbols indicate external characteristics.

COLOR

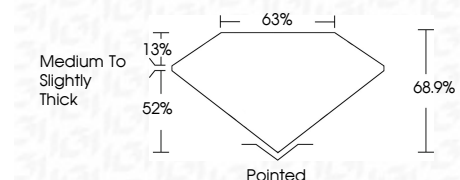
D E F G H I J Faint Very Light Light

CLARITY

IF VS 1-2 VS 1-2 SI 1-2 I 1-3
Internally Flawless Very Very Slightly Included Very Slightly Included Slightly Included Included



September 14, 2024
IGI Report Number LG651439923
Description LABORATORY GROWN DIAMOND
Shape and Cutting Style CUT CORNERED RECTANGULAR MODIFIED BRILLIANT
Measurements 8.91 X 6.33 X 4.36 MM
GRADING RESULTS
Carat Weight 2.10 CARATS
Color Grade E
Clarity Grade VVS 2



ADDITIONAL GRADING INFORMATION

Polish EXCELLENT
Symmetry EXCELLENT
Fluorescence NONE
Inscription(s) LG651439923

Comments: This Laboratory Grown Diamond was created by Chemical Vapor Deposition (CVD) growth process.
Type IIa



IGI



September 14, 2024
IGI Report No LG651439923
CUT CORNERED RECT. MODIFIED BRILLIANT
8.91 X 6.33 X 4.36 MM
2.10 CARATS
E
VVS 2
68.9%
52%
Medium to Slightly Thick
Pointed
EXCELLENT
EXCELLENT
NONE
IGI LG651439923

Comments: This Laboratory Grown Diamond was created by Chemical Vapor Deposition (CVD) growth process.
Type IIa